

the stony

**4 BEDROOM
+ 2.5 BATH**

Elevation B - 1,850 sq. ft.

Elevation C - 1,835 sq. ft.

BA33-10



Elevation B - 1,850 sq. ft.



Elevation C - 1,835 sq. ft.



32' singles



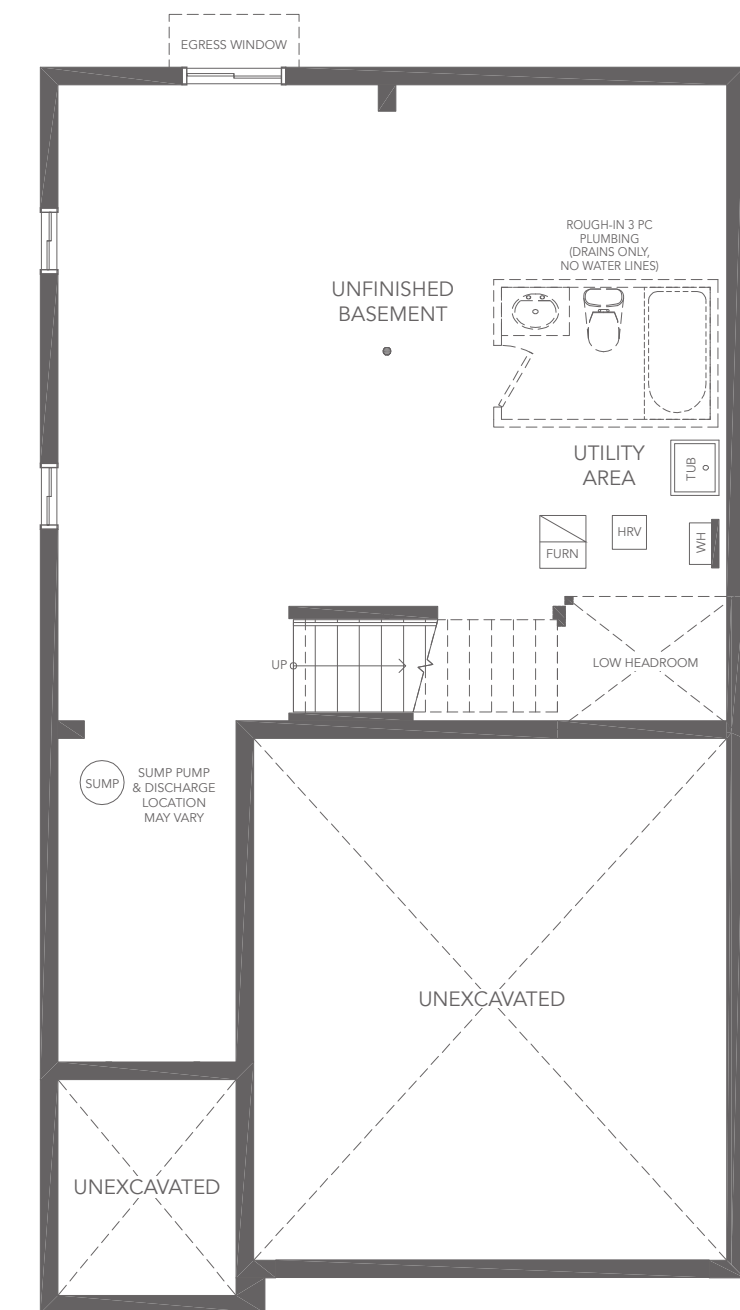
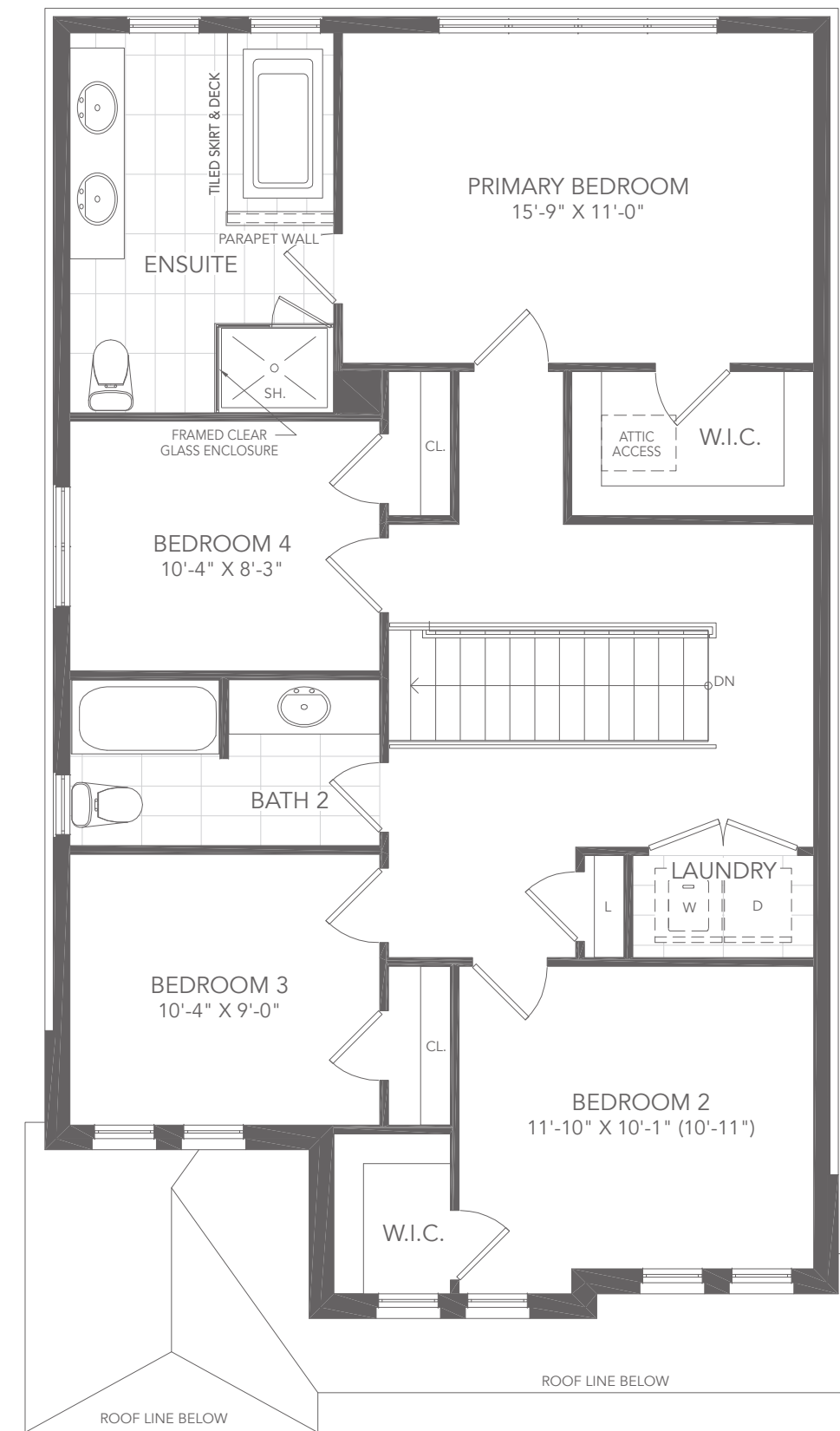
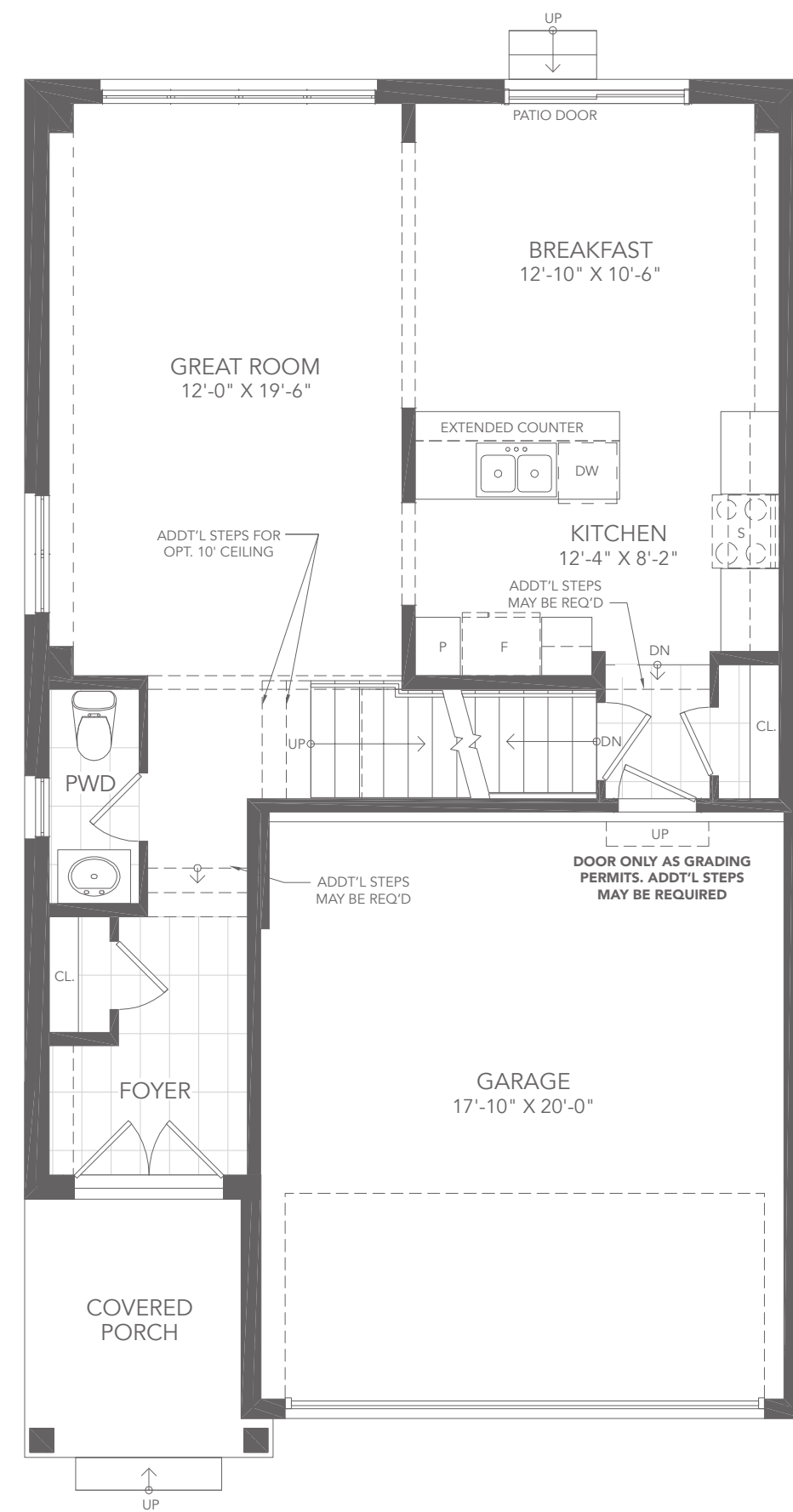
the stony

4 BEDROOM + 2.5 BATH

Elevation B - 1,850 sq. ft.

Elevation C - 1,835 sq. ft.

BA33-10



32' singles