

the sawyer

**5 BEDROOM
+ 3.5 BATH**

Elevation B – 2,900 sq. ft.

Elevation C – 2,900 sq. ft.

All elevations include 650 sq. ft. of finished basement area

BA33-8



Elevation B – 2,900 sq. ft.

fullhouse
EDITION



32' singles



Elevation C – 2,245 sq. ft.

 **GREAT GULF**

the sawyer

5 BEDROOM + 3.5 BATH

Elevation B - 2,900 sq. ft.

Elevation C - 2,900 sq. ft.

All elevations include 650 sq. ft. of finished basement area

BA33-8

fullhouse
EDITION

As part of Great Gulf's commitment to always deliver greater value, we bring you our new, exclusive and unprecedented collection of homes.

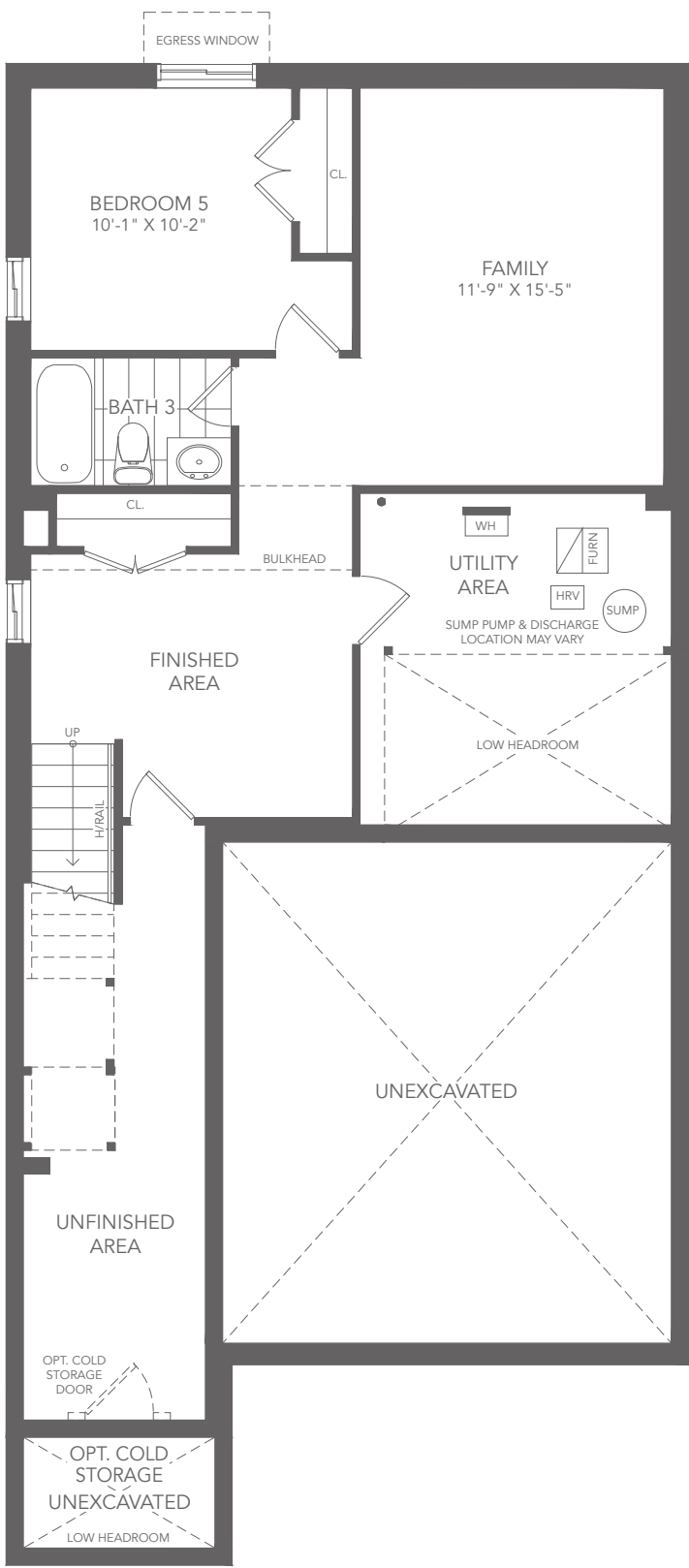
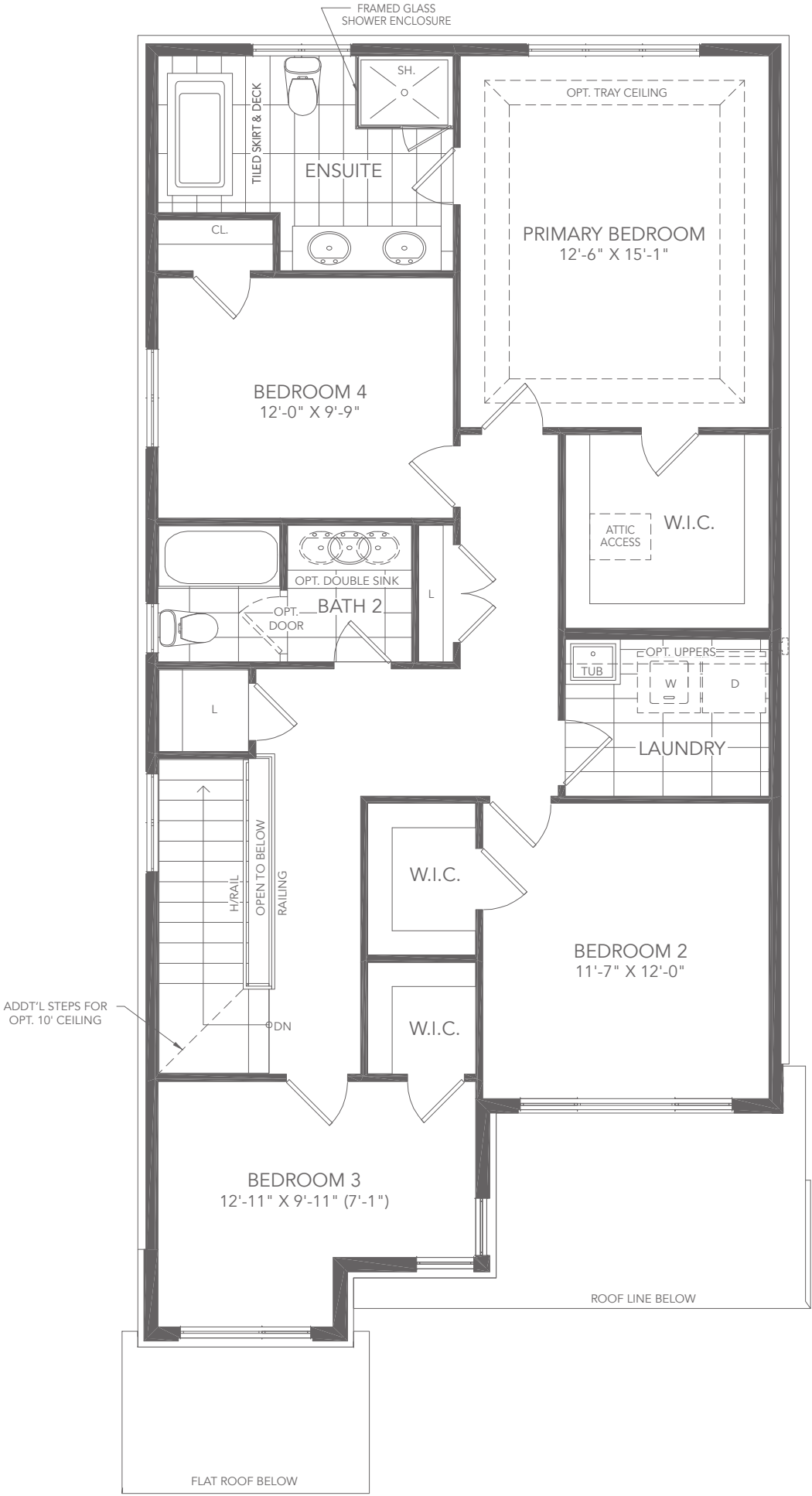
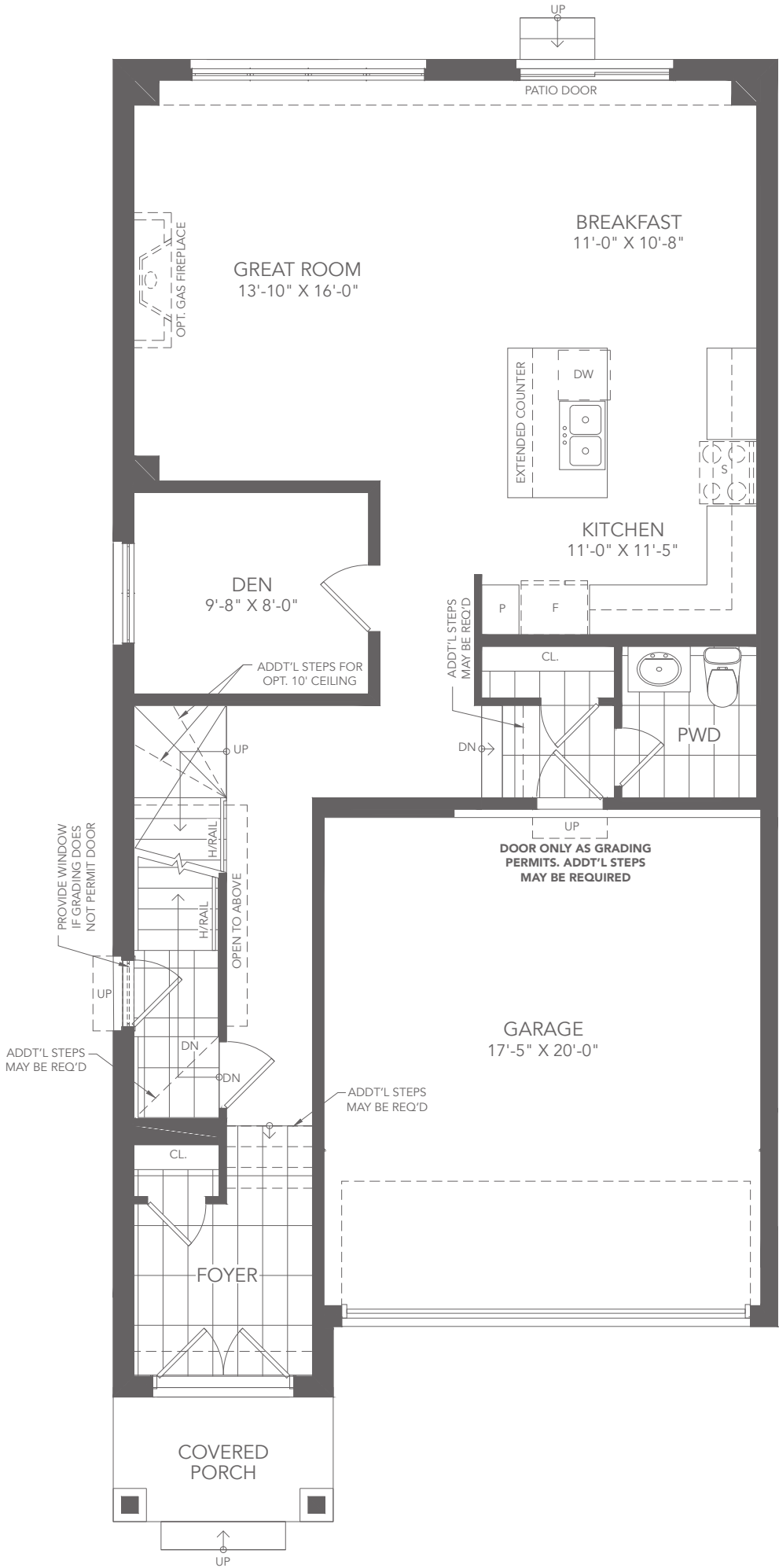
YOUR FULL HOUSE INCLUDES:

Finished basement with:

- Additional 5th bedroom
- Additional full bathroom
- Larger basement windows
- Full underslab insulation
- Main floor side door entry*

*As grading permits. E. & OE.

GREAT GULF



All illustrations are artist's concept. All dimensions are approximate. Sizes and specifications are subject to change without notice. Note: Actual usable floor space may vary from the stated floor area. Actual layout may be reverse of layout shown. E. & O.E.

32' singles

