

Whitney

4 BEDROOM + 3.5 BATH

Elevation A - 2,295 sq. ft.

Elevation B - 2,290 sq. ft.

MP36-33



Elevation B - 2,290 sq. ft.



Elevation A - 2,295 sq. ft.

36'
Singles



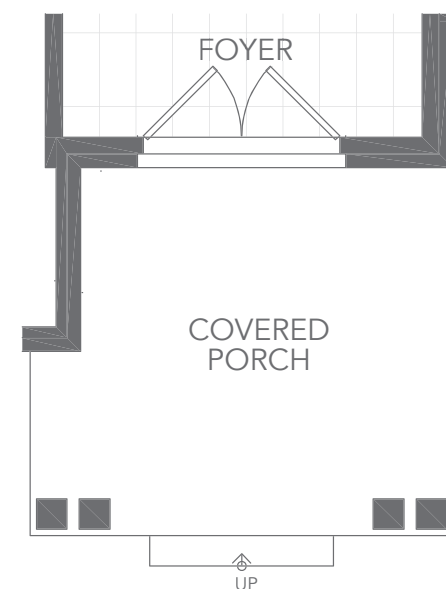
MILTON
VILLAGE

Whitney

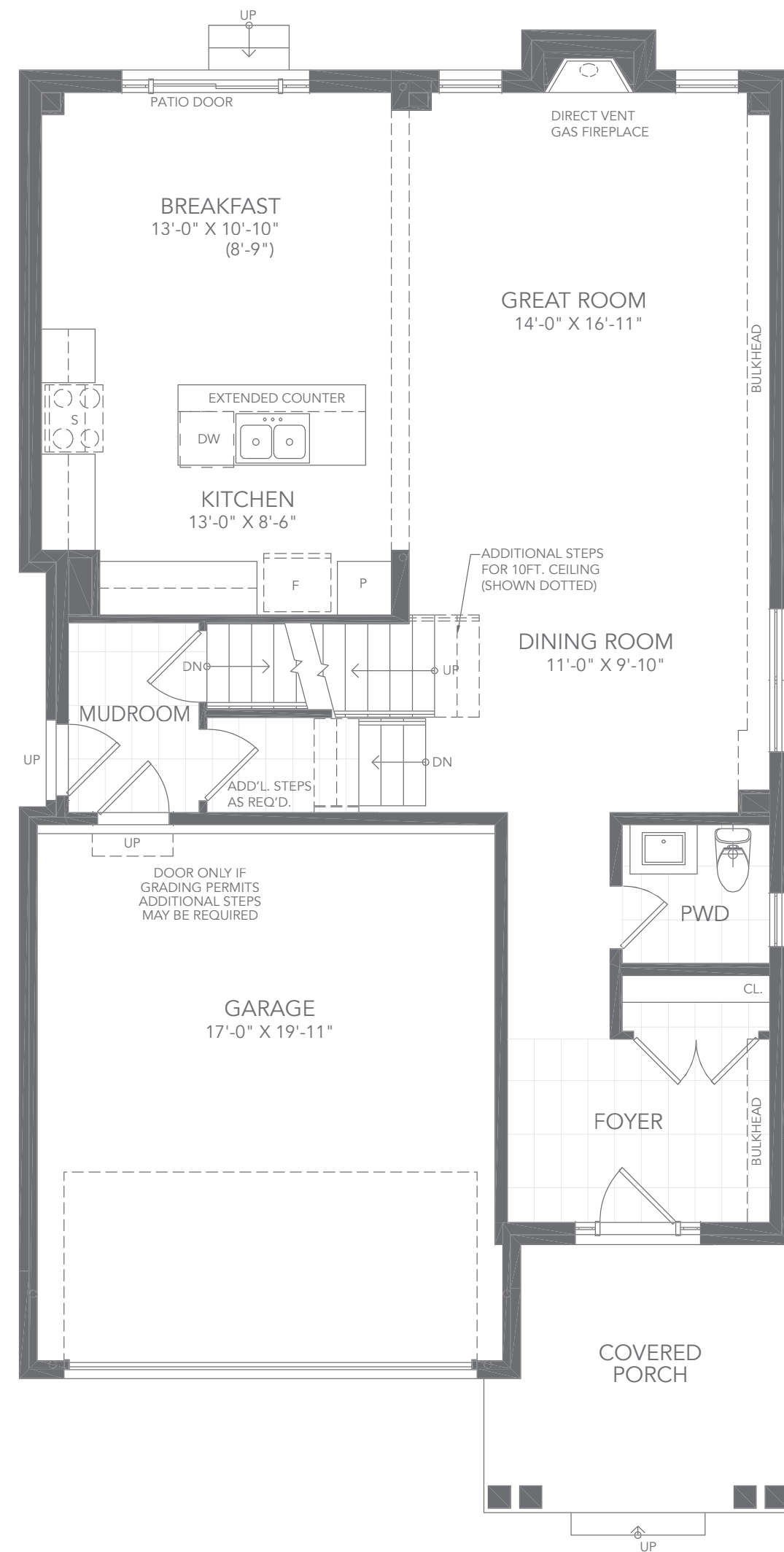
4 BEDROOM + 3.5 BATH

Elevation A - 2,295 sq. ft.

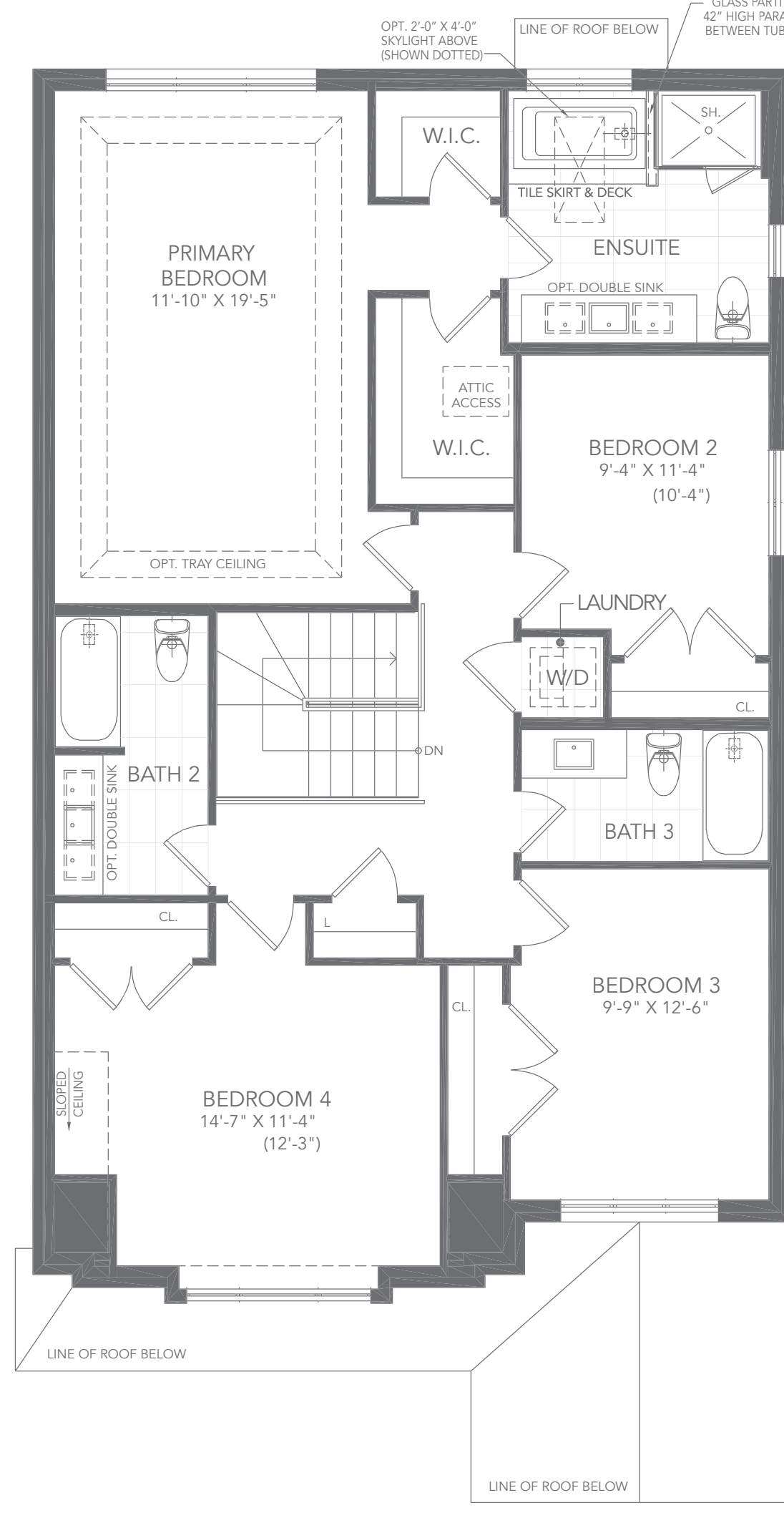
MP36-33



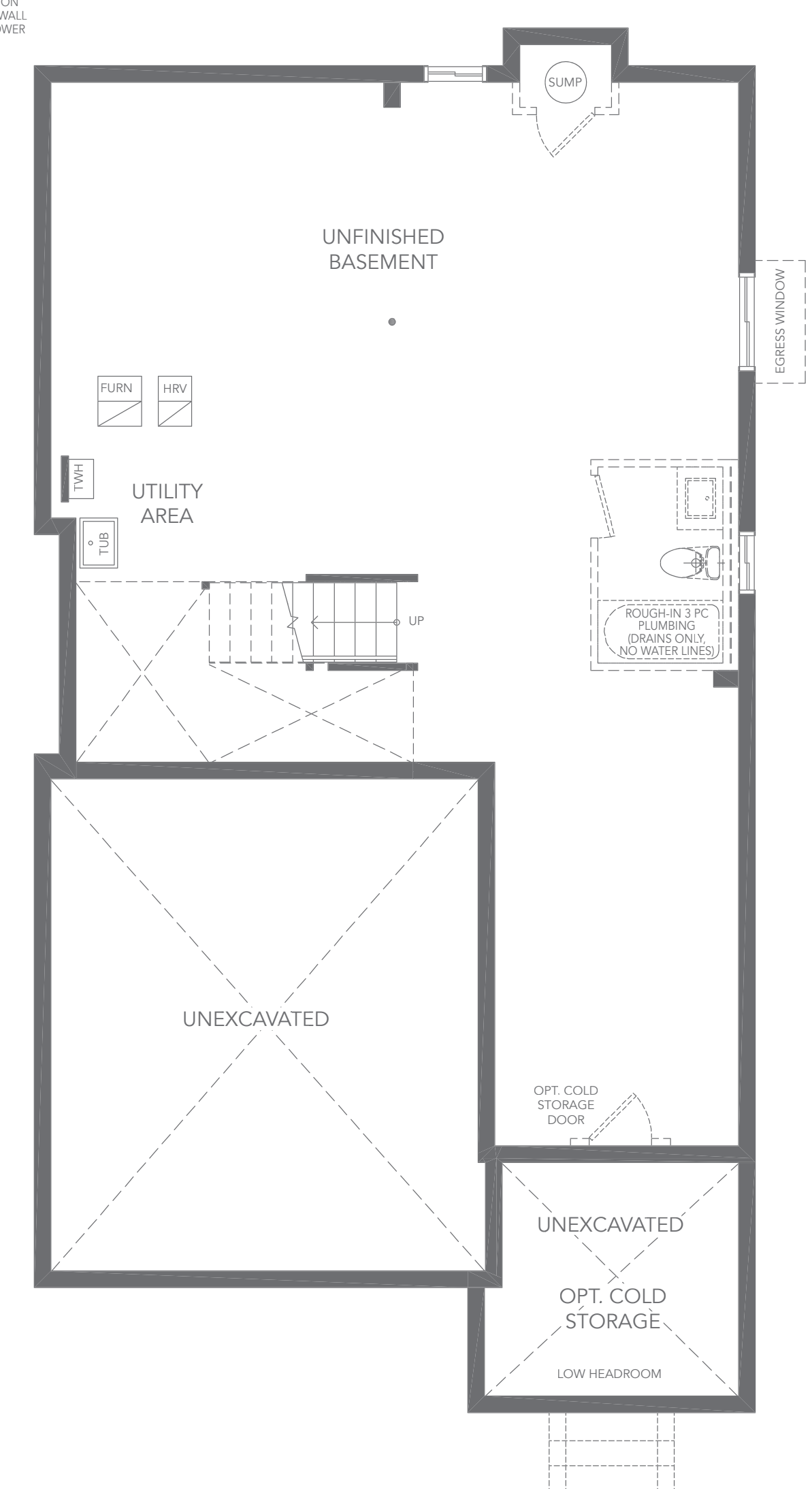
OPT. DOUBLE FRONT DOOR A



GROUND FLOOR PLAN A



SECOND FLOOR PLAN A



BASEMENT PLAN A



All illustrations are artist's concept. All dimensions are approximate. Sizes and specifications are subject to change without notice. Actual usable floor space varies from the stated area. Actual layout may be reverse of layout shown. E. & O.E. September 2024.



36' Singles