

# Baldwin

3 BEDROOM + 2.5 BATH

Elevation A - 1,900 sq. ft.

Elevation B - 1,895 sq. ft.

Elevation C - 1,885 sq. ft.

Elevation D - 1,880 sq. ft.

MP36-01

36'  
Singles



MILTON  
VILLAGE



Elevation A - 1,900 sq. ft.



Elevation B - 1,895 sq. ft.

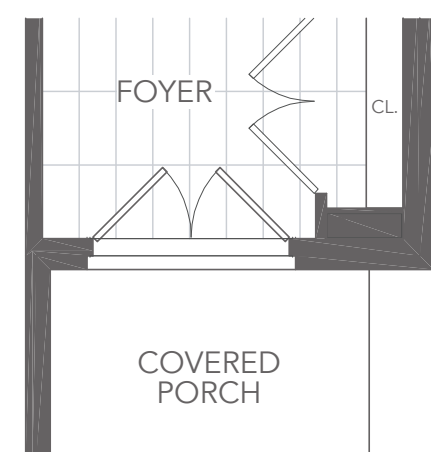


# Baldwin

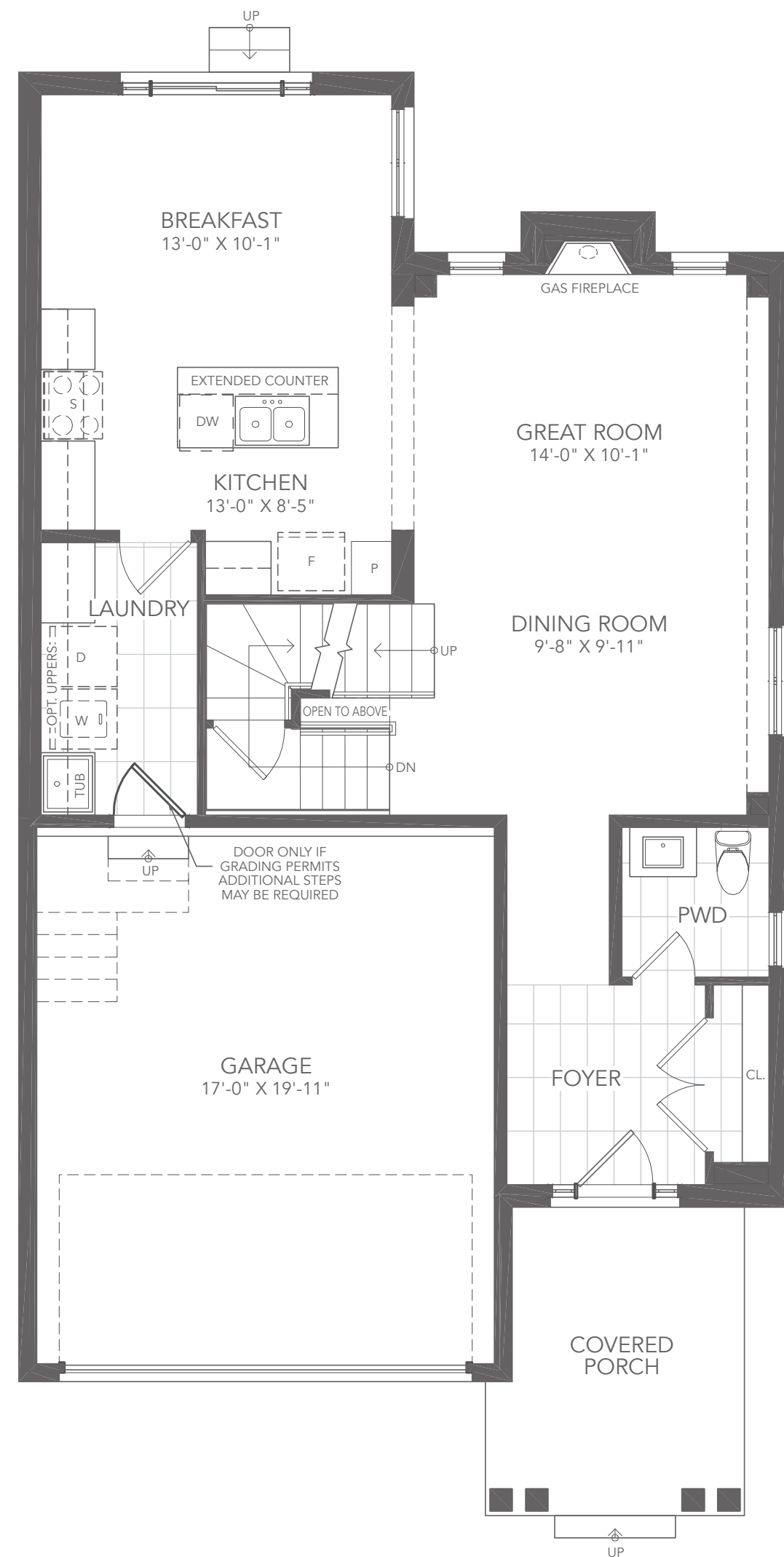
3 BEDROOM + 2.5 BATH

Elevation A - 1,900 sq. ft.

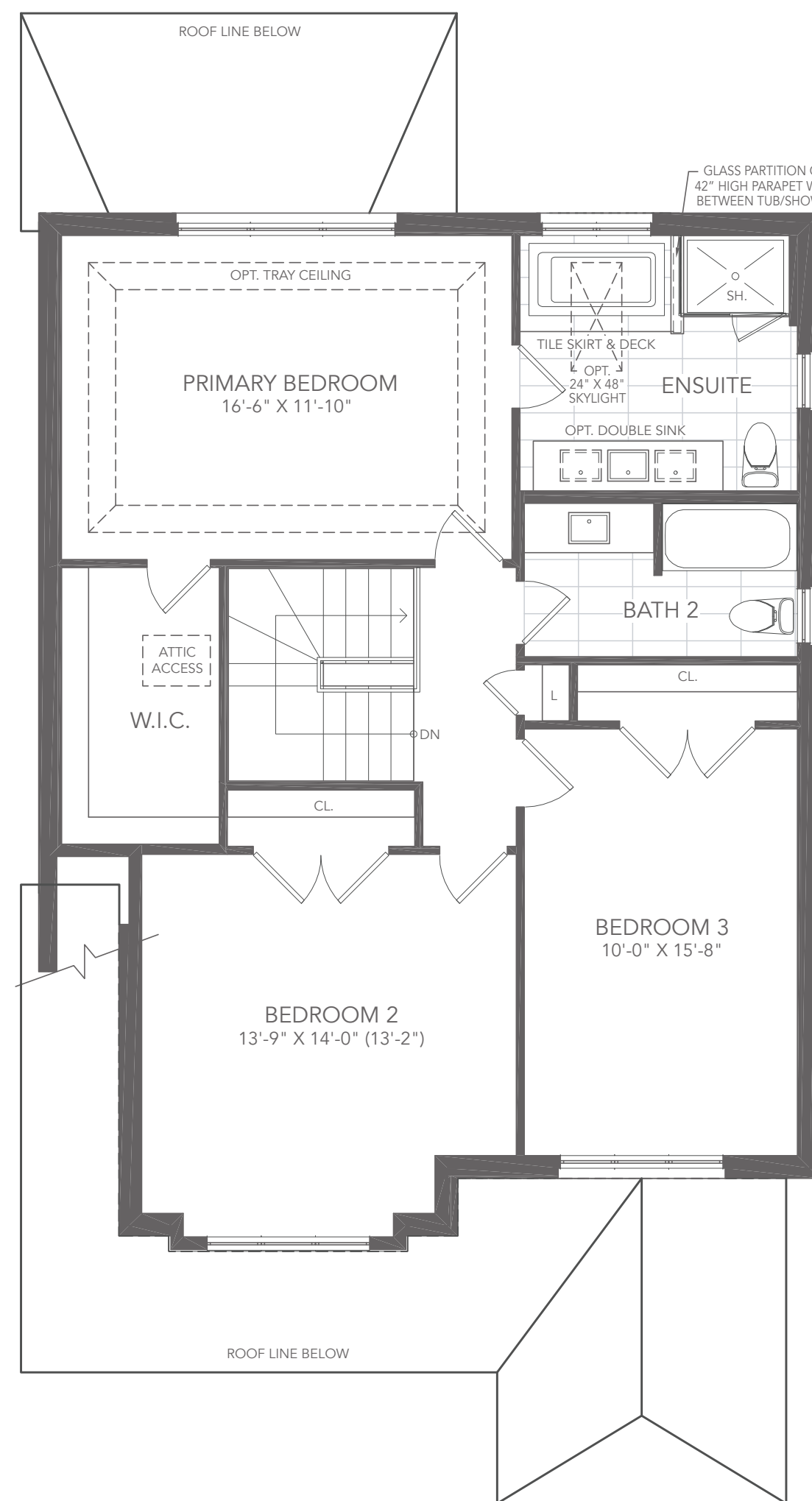
MP36-01



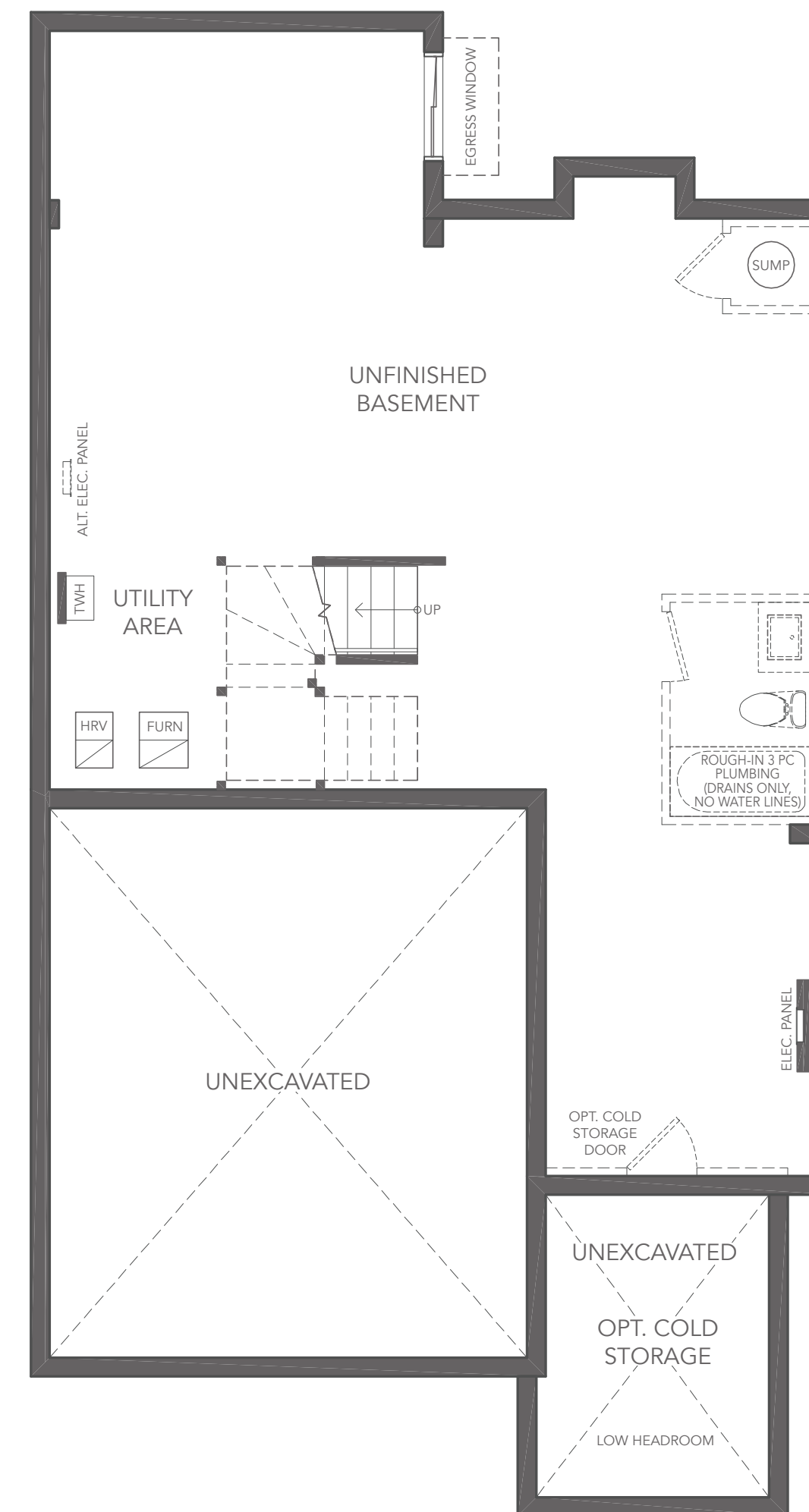
OPT. DOUBLE FRONT DOOR A



GROUND FLOOR PLAN A



SECOND FLOOR PLAN A



BASEMENT PLAN A



All illustrations are artist's concept. All dimensions are approximate. Sizes and specifications are subject to change without notice. Actual usable floor space varies from the stated area. Actual layout may be reverse of layout shown. E. & O.E. May 2024.

 **GREAT GULF**

36' Singles