

# Barclay

4 BEDROOM + 3.5 BATH + LOFT

Elevation A - 3,195 sq. ft.

Elevation B - 3,220 sq. ft.

MP45-01



Elevation A - 3,195 sq. ft.



Elevation B - 3,220 sq. ft.

.....

## 45' Singles



**MILTON  
VILLAGE**

.....

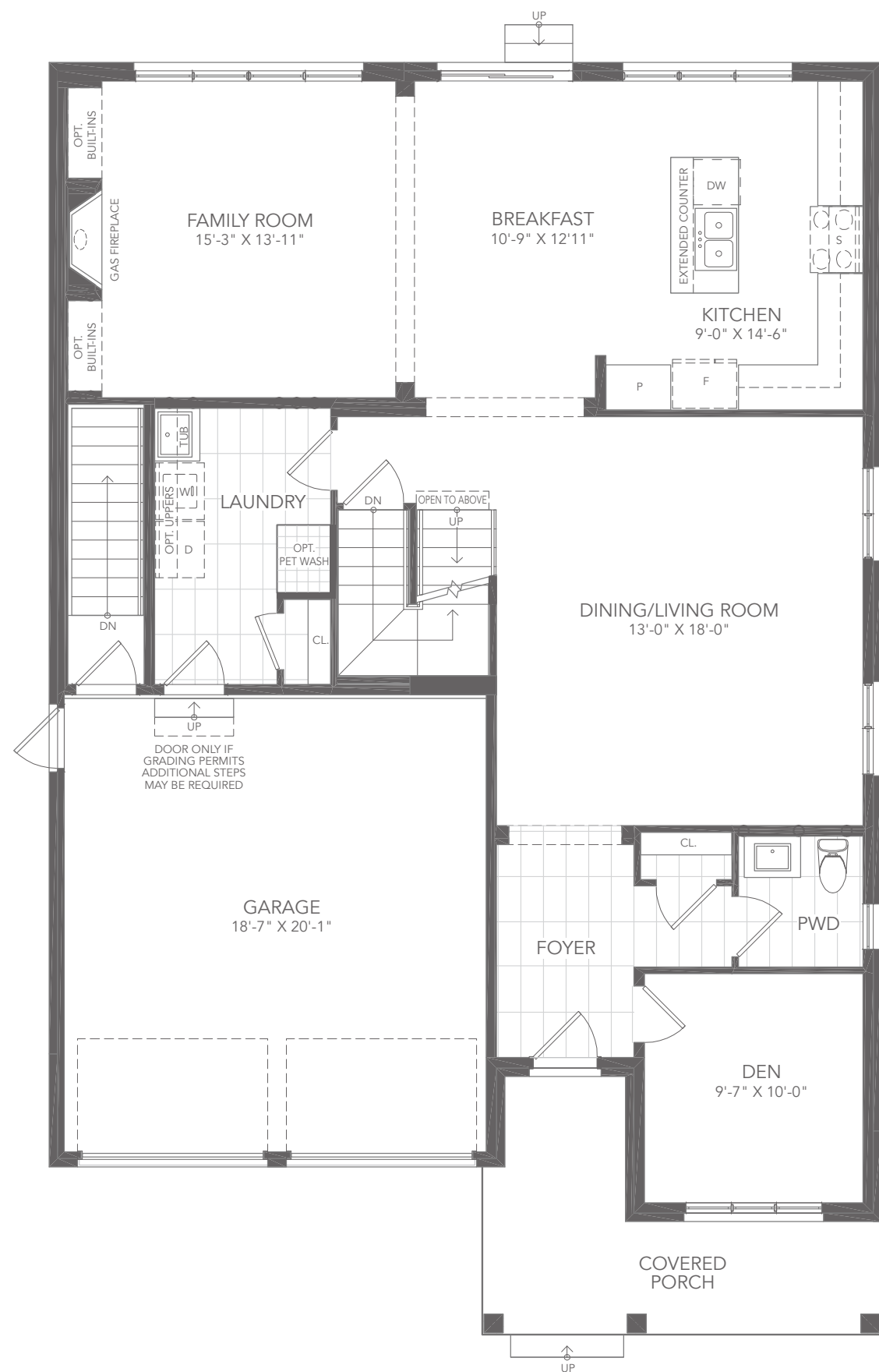


# Barclay

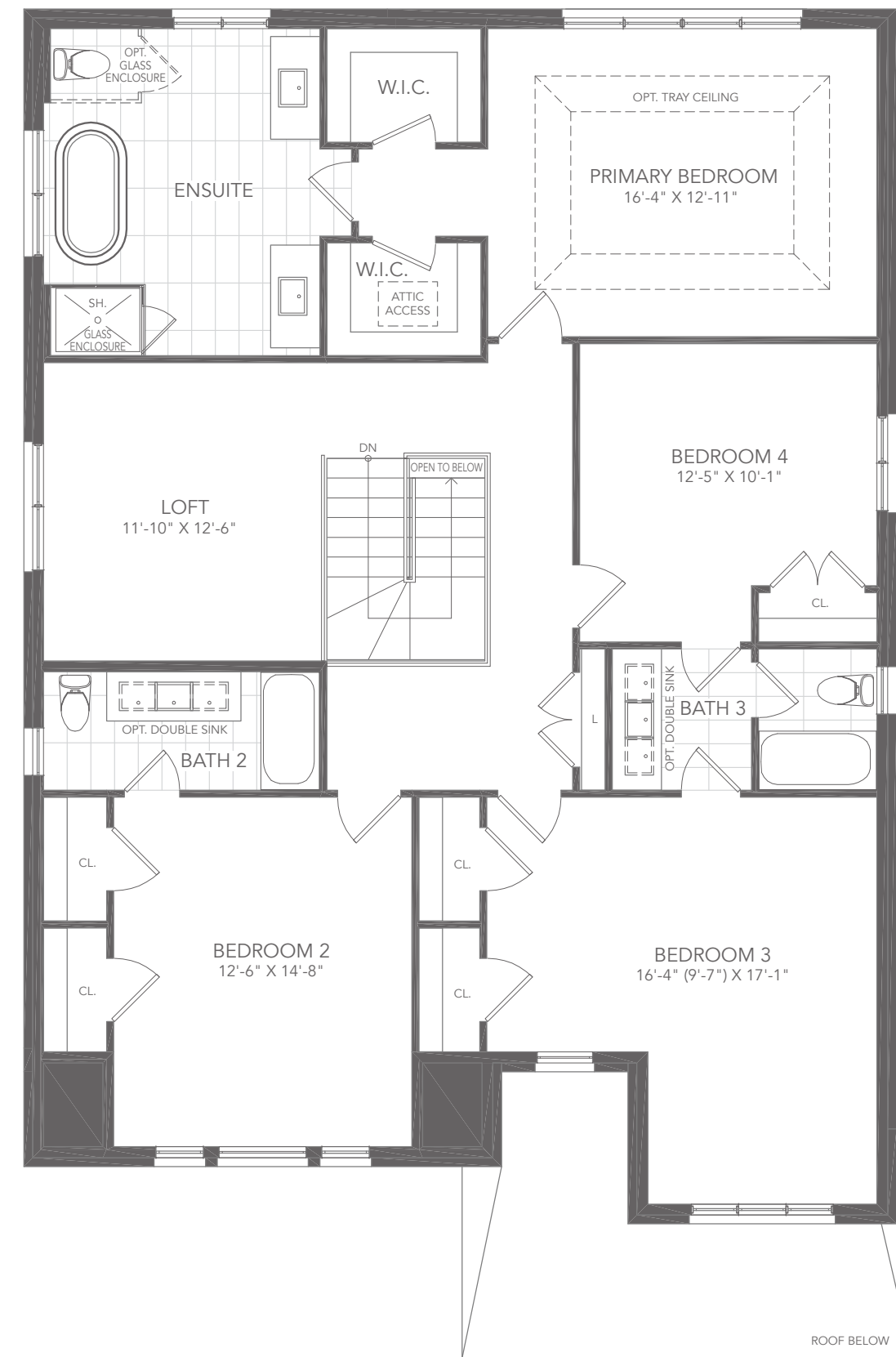
## 4 BEDROOM + 3.5 BATH + LOFT

Elevation A - 3,195 sq. ft.

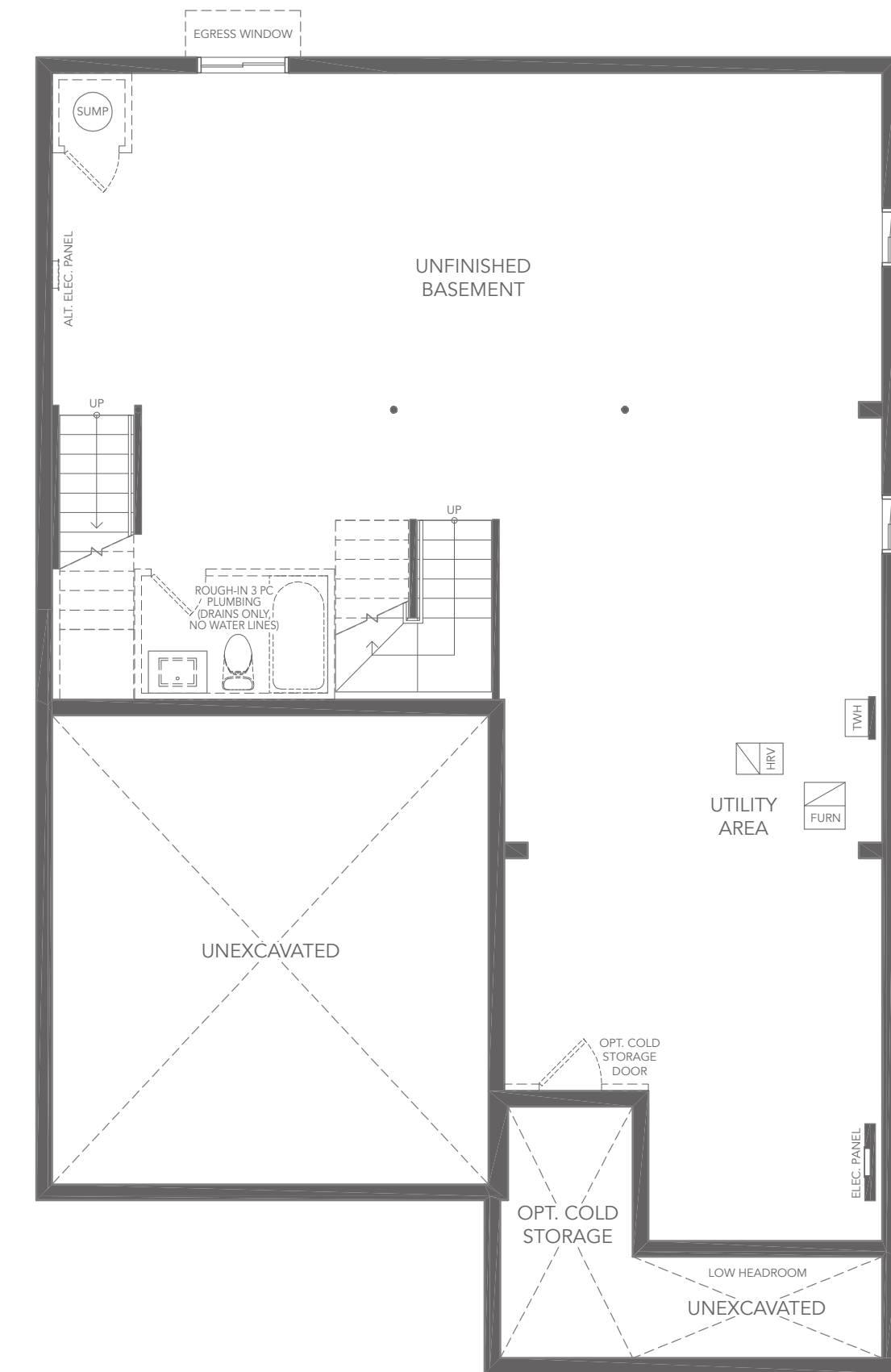
MP45-01



GROUND FLOOR PLAN A



SECOND FLOOR PLAN A



BASEMENT PLAN A

All illustrations are artist's concept. All dimensions are approximate. Sizes and specifications are subject to change without notice. Actual usable floor space varies from the stated area. Actual layout may be reverse of layout shown. E. & O.E. May 2024.

 **GREAT GULF**



45' Singles