

Bristol

3 BEDROOM + 2.5 BATH

Elevation A - 1,810 sq. ft.

Elevation B - 1,835 sq. ft.

MP31-01



Elevation A - 1,810 sq. ft.



Elevation B - 1,835 sq. ft.

31'
Singles



MILTON
VILLAGE

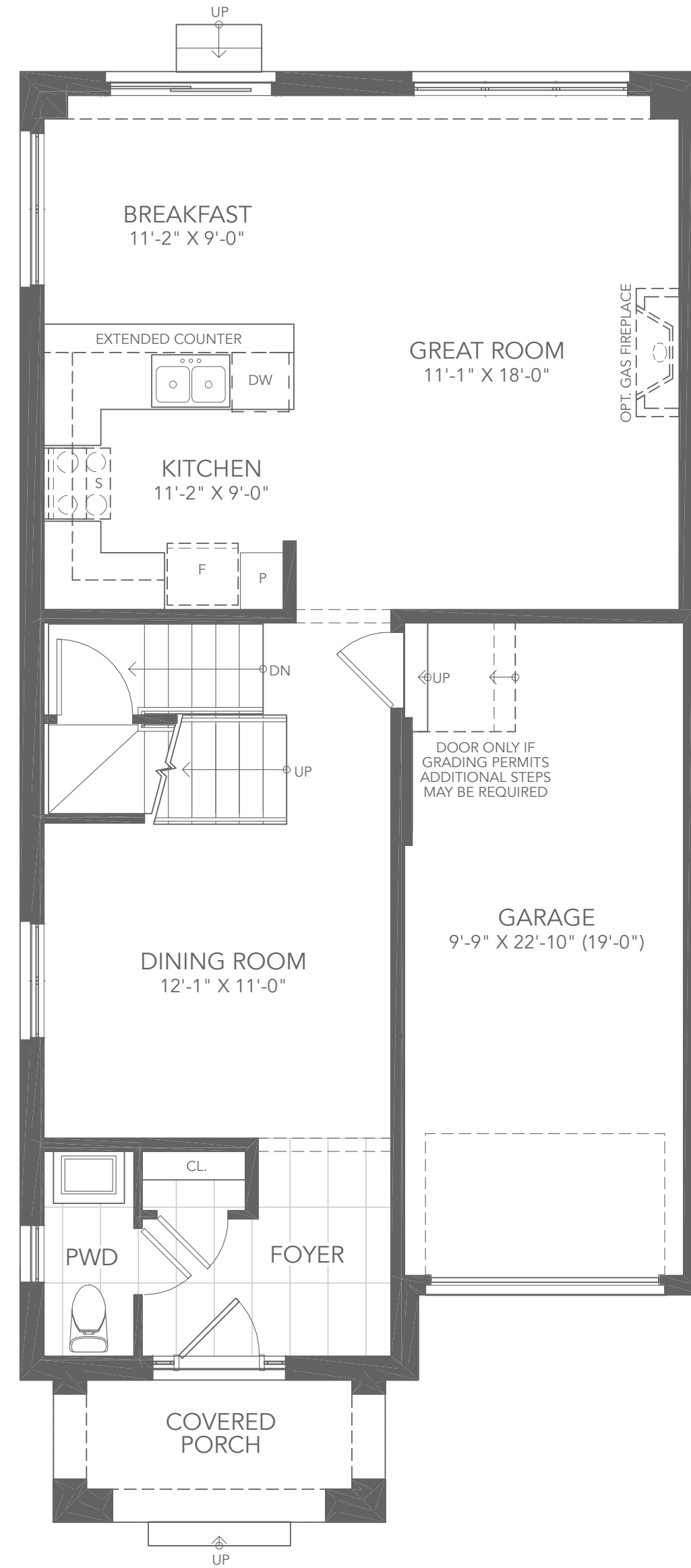
GREAT GULF

Bristol

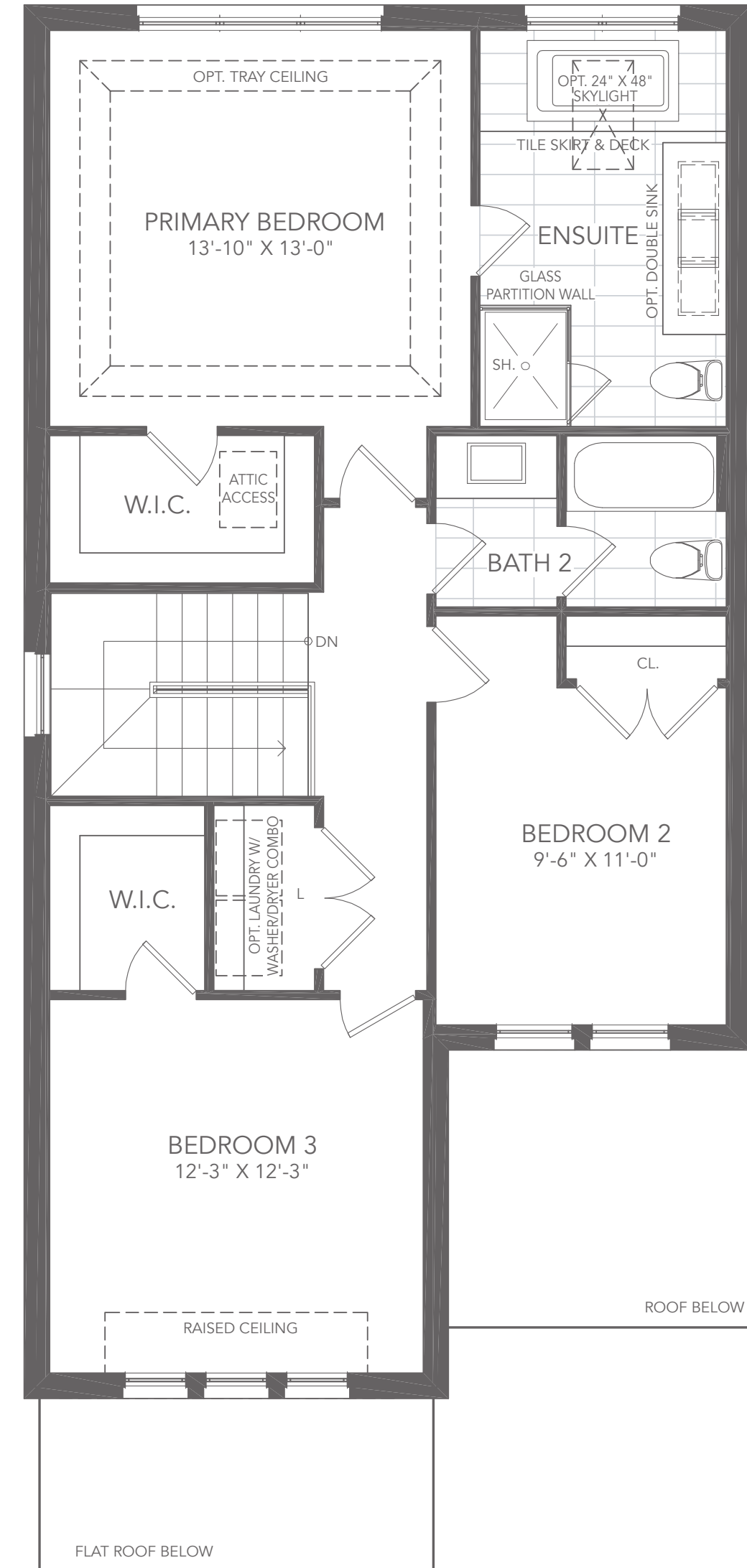
3 BEDROOM + 2.5 BATH

Elevation A - 1,810 sq. ft.

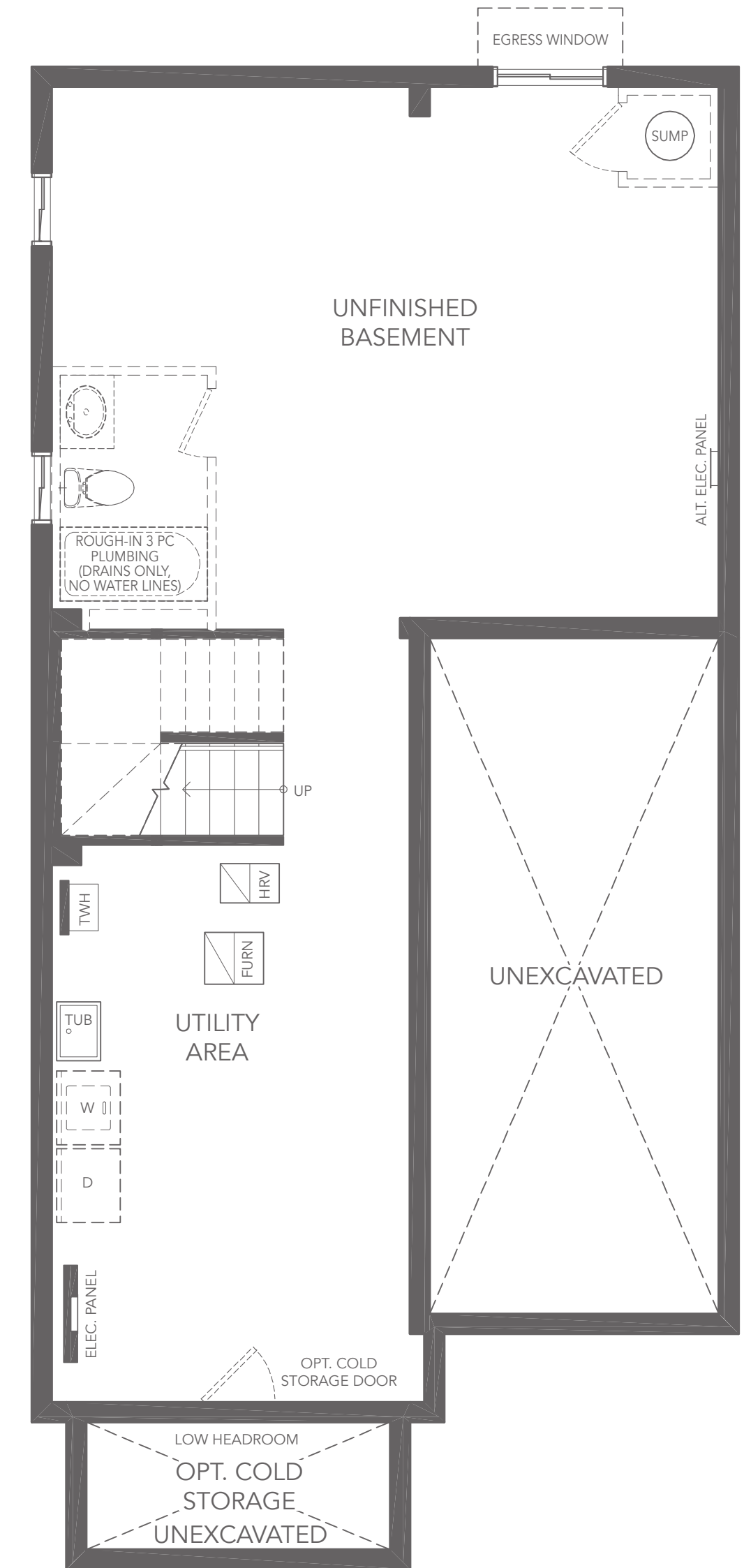
MP31-01



GROUND FLOOR PLAN A



SECOND FLOOR PLAN A



BASEMENT PLAN A

All illustrations are artist's concept. All dimensions are approximate. Sizes and specifications are subject to change without notice. Actual usable floor space varies from the stated area. Actual layout may be reverse of layout shown. E. & O.E. May 2024.



31' Singles