

Fay

4 BEDROOM + 3.5 BATH + DEN

Elevation A - 3,385 sq. ft.

Elevation B - 3,395 sq. ft.

Elevation C - 3,375 sq. ft.

Elevation D - 3,385 sq. ft.

MP45-04

.....

45' Singles



**MILTON
VILLAGE**

.....



Elevation A - 3,385 sq. ft.



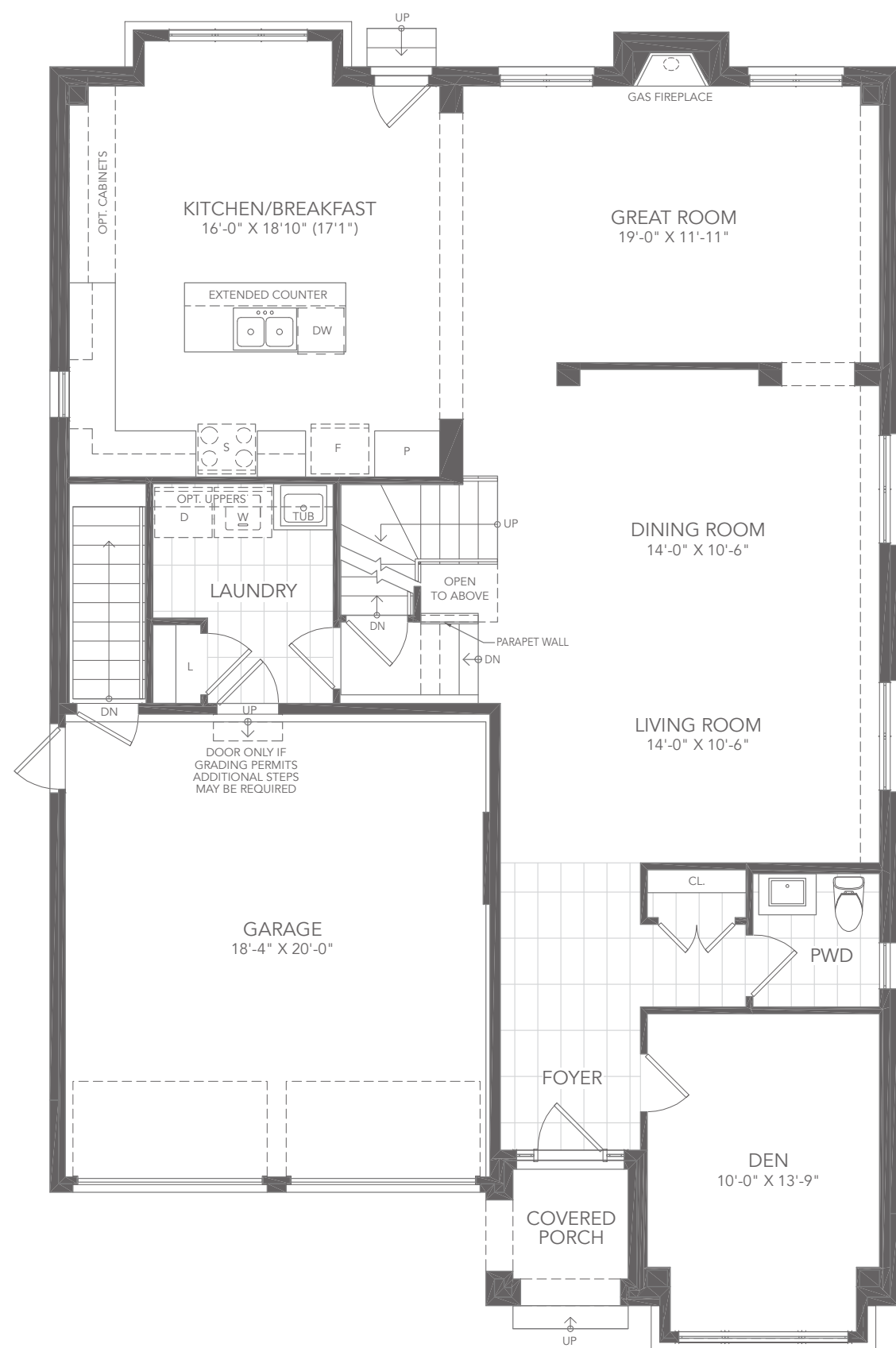
Elevation B - 3,395 sq. ft.

Fay

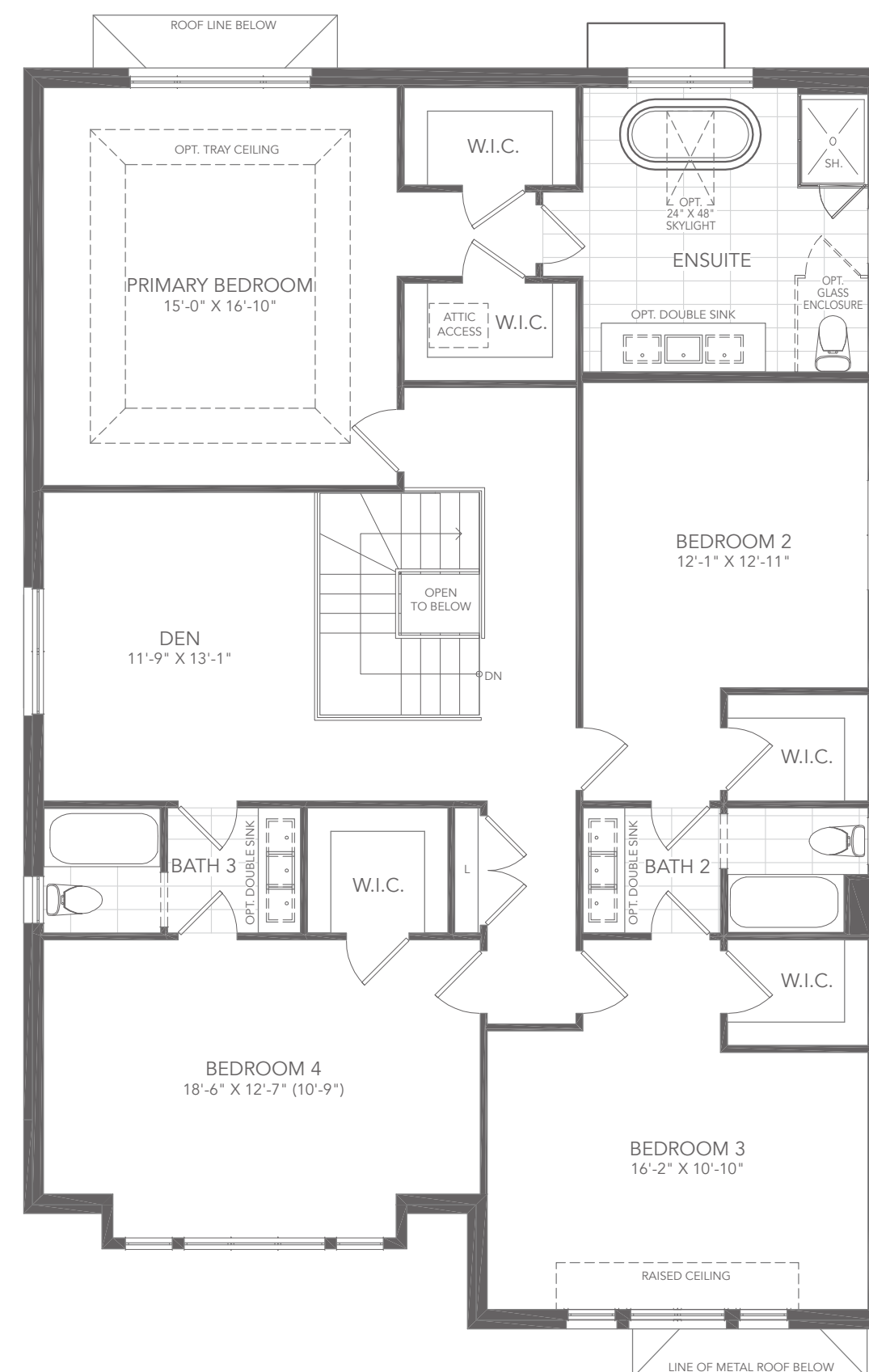
4 BEDROOM + 3.5 BATH + DEN

Elevation A - 3,385 sq. ft.

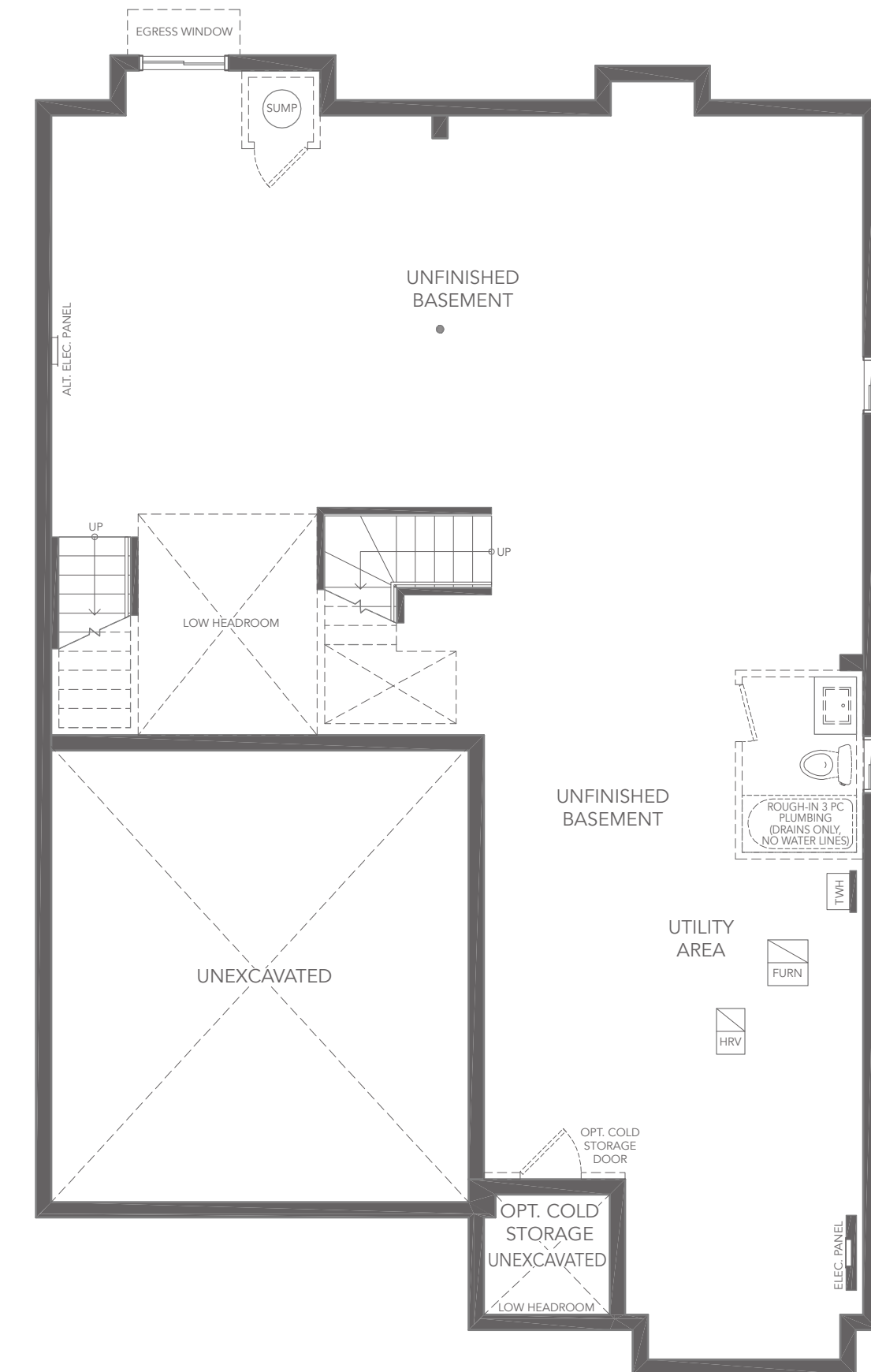
MP45-04



GROUND FLOOR PLAN A



SECOND FLOOR PLAN A



BASEMENT PLAN A



All illustrations are artist's concept. All dimensions are approximate. Sizes and specifications are subject to change without notice. Actual usable floor space varies from the stated area. Actual layout may be reverse of layout shown. E. & O.E. May 2024.



45' Singles