

# Gable

4 BEDROOM + 2.5 BATH

Elevation A - 2,300 sq. ft.

Elevation B - 2,325 sq. ft.

MP36-06



Elevation A - 2,300 sq. ft.



Elevation B - 2,325 sq. ft.

36'  
Singles



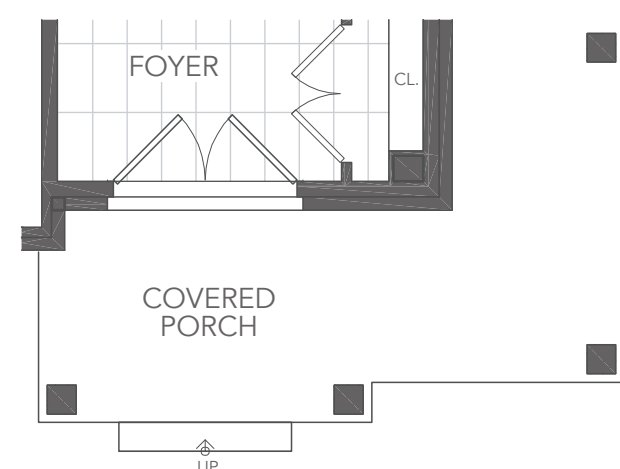
MILTON  
VILLAGE

# Gable

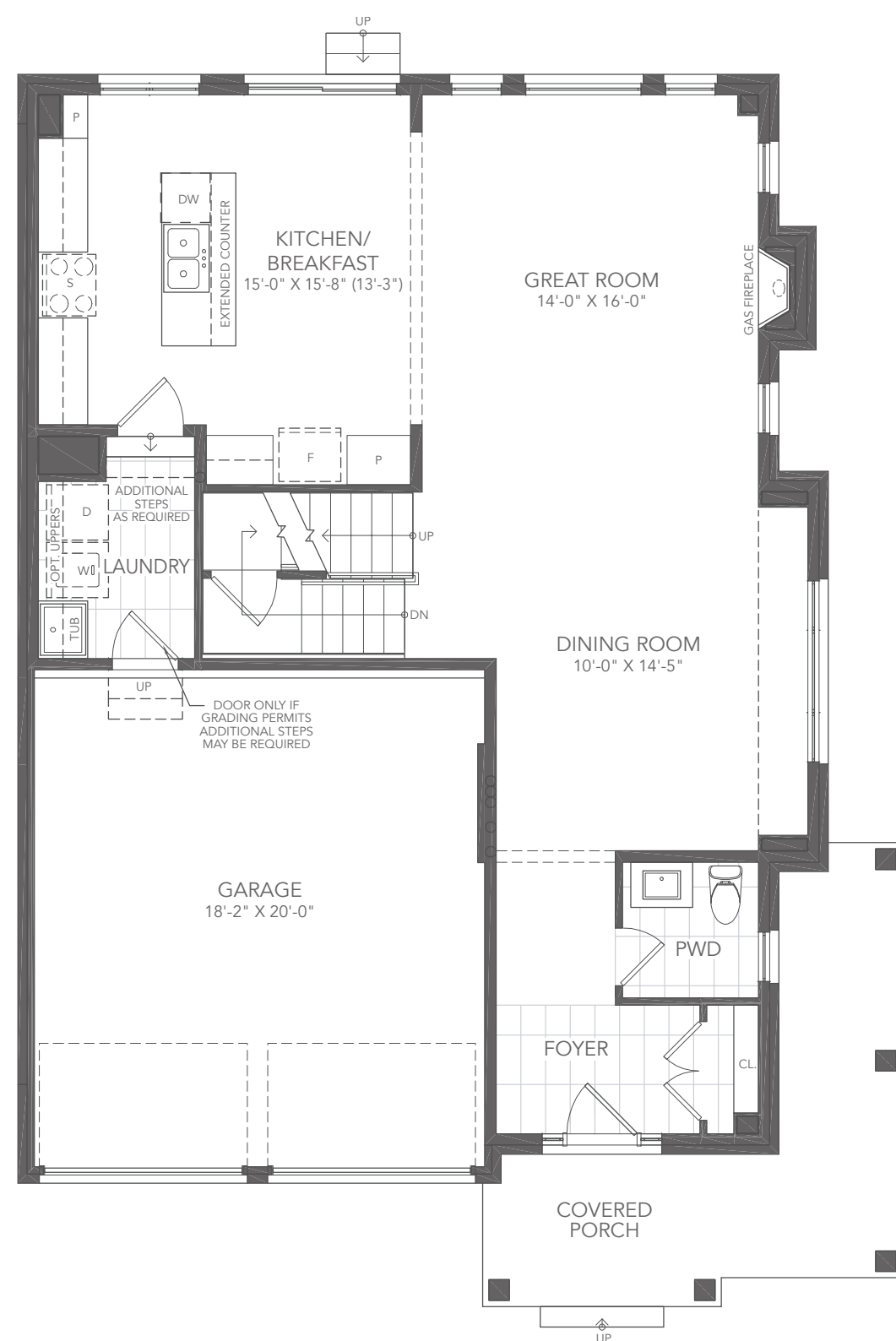
## 4 BEDROOM + 2.5 BATH

Elevation A - 2,300 sq. ft.

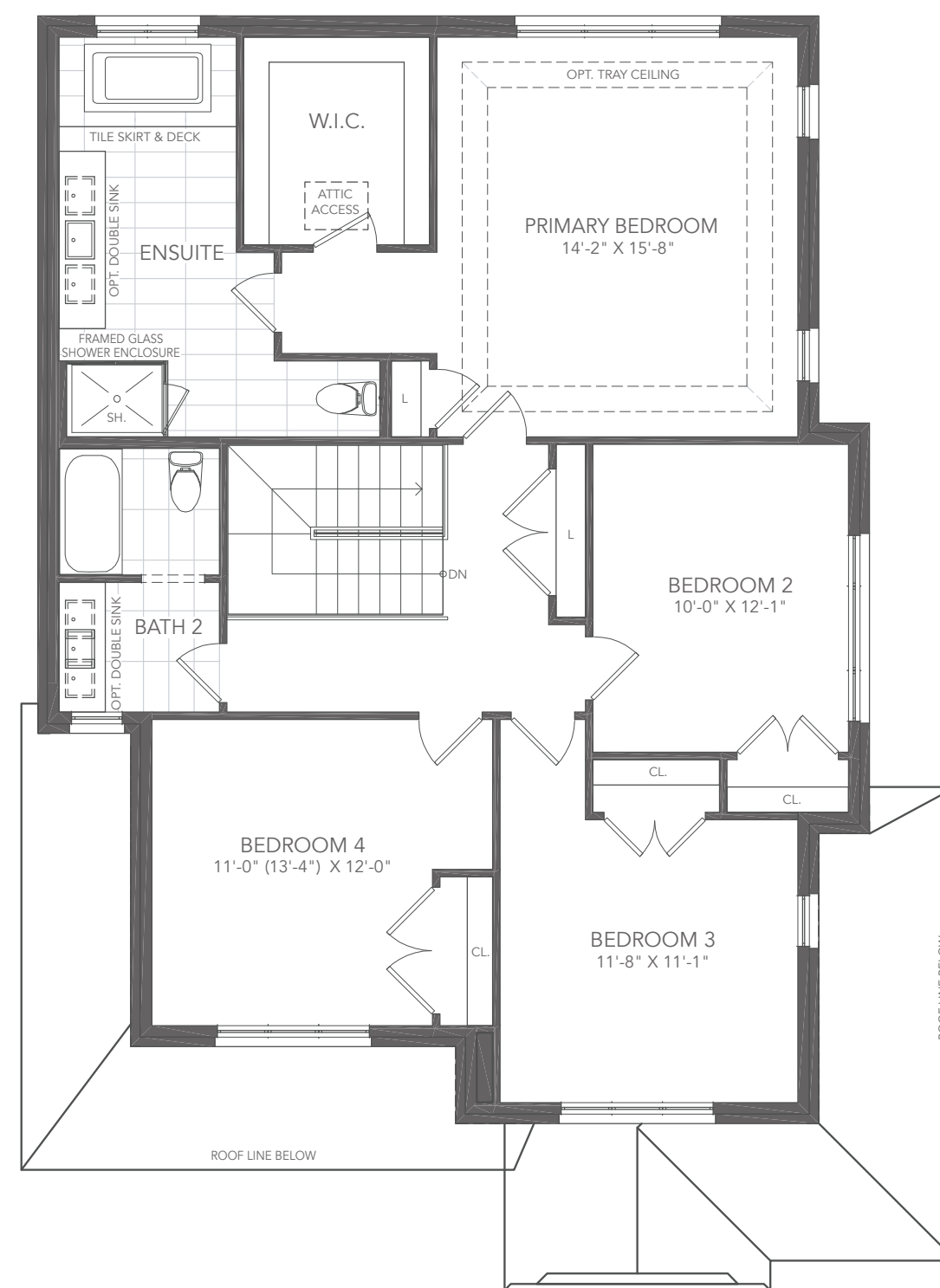
MP36-06



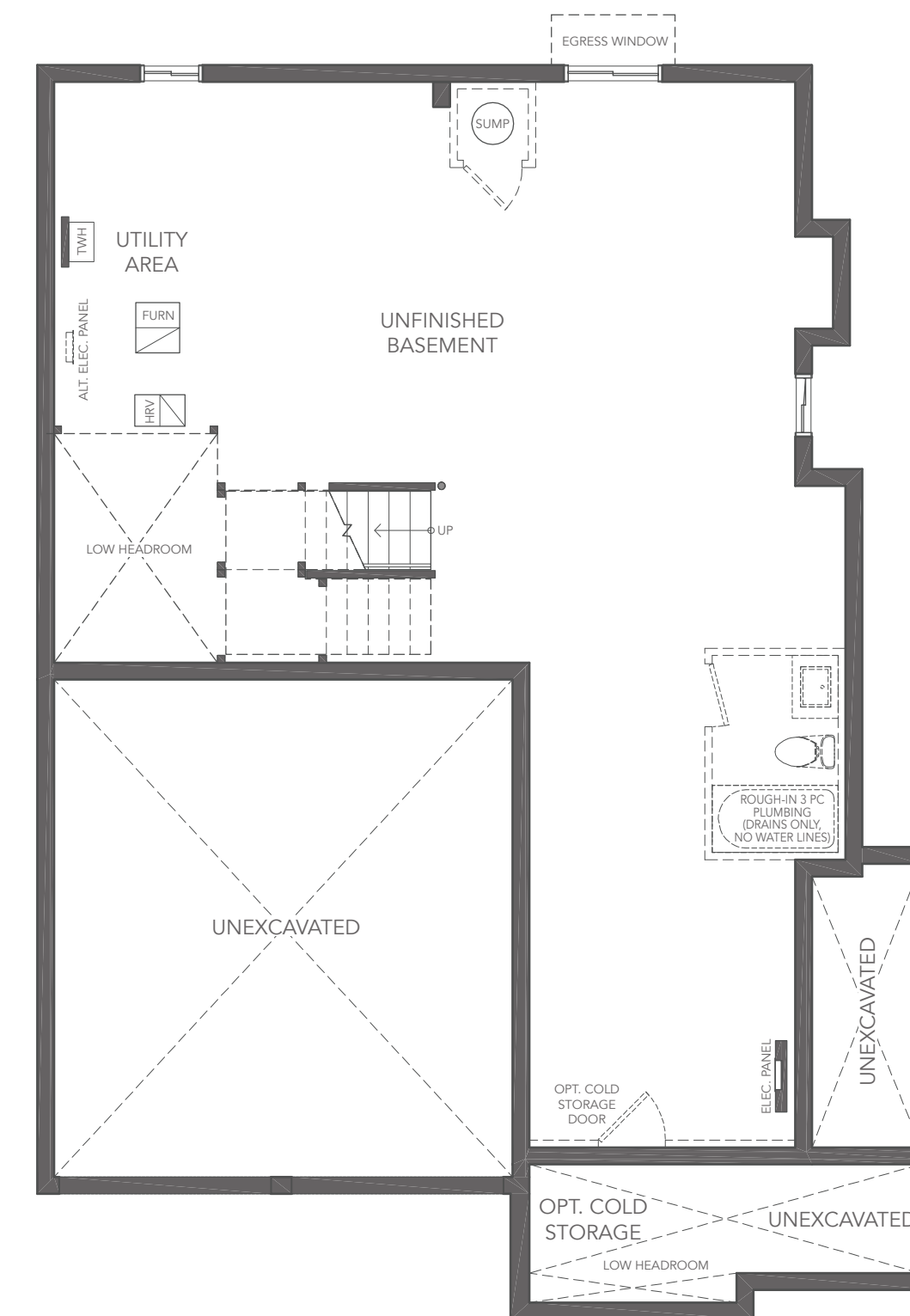
OPT. DOUBLE FRONT DOOR A



GROUND FLOOR PLAN A



SECOND FLOOR PLAN A



BASEMENT PLAN A



All illustrations are artist's concept. All dimensions are approximate. Sizes and specifications are subject to change without notice. Actual usable floor space varies from the stated area. Actual layout may be reverse of layout shown. E. & O.E. May 2024.

**GREAT GULF**

36' Singles