

Kelso

4 BEDROOM + 3.5 BATH

Elevation A - 2,305 sq. ft.

Elevation B - 2,300 sq. ft.

MP36-03



Elevation A - 2,305 sq. ft.



Elevation B - 2,300 sq. ft.

36'
Singles



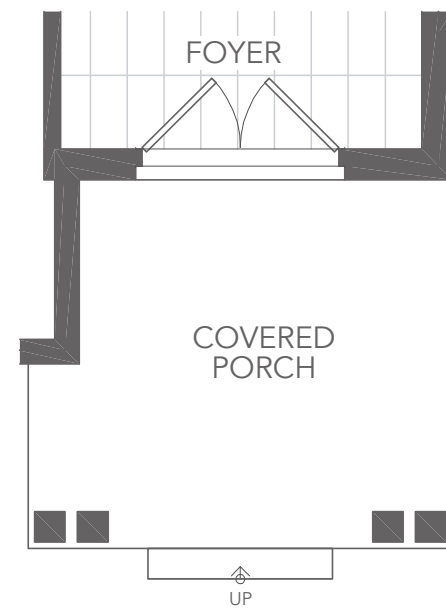
MILTON
VILLAGE

Kelso

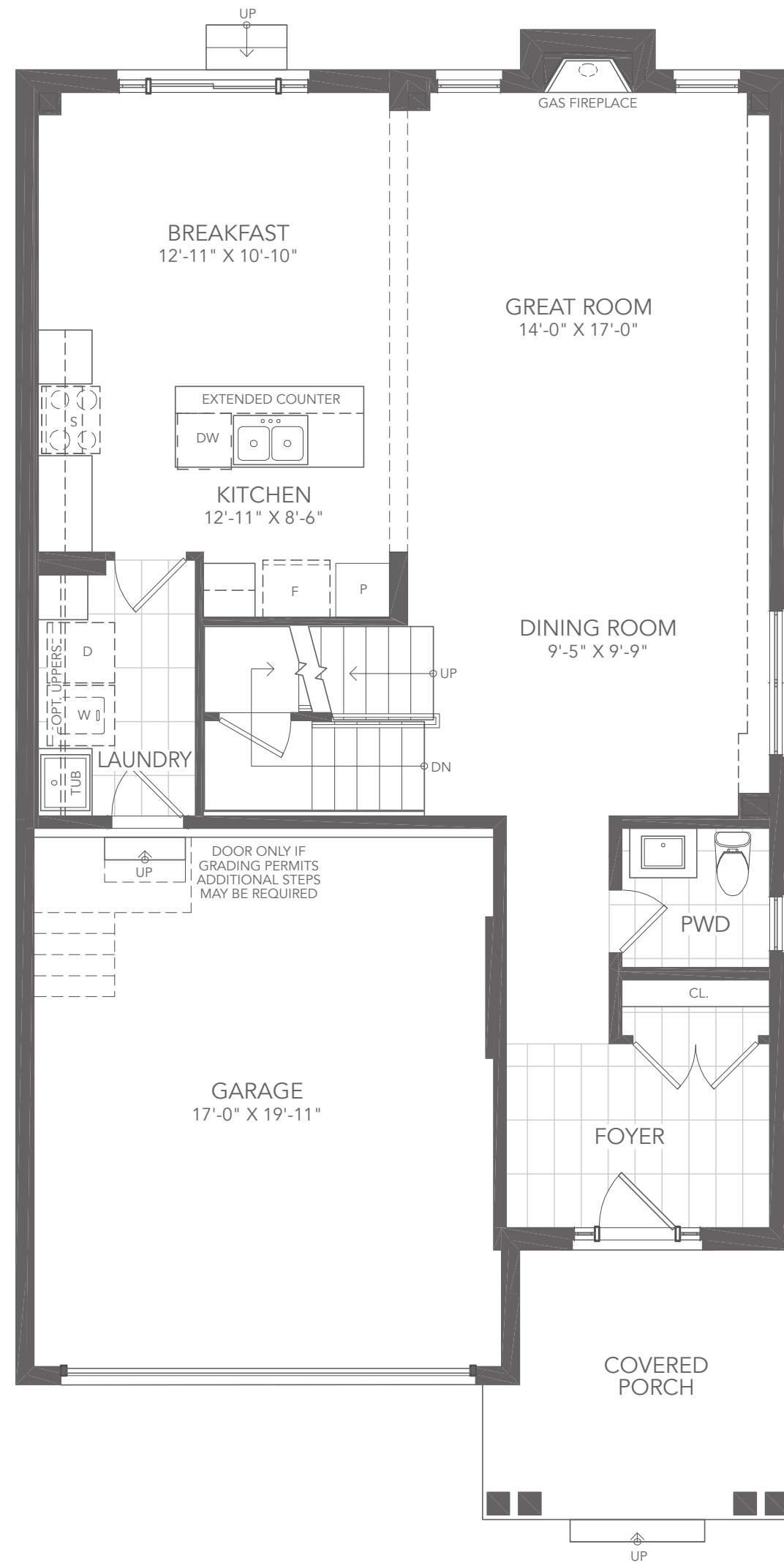
4 BEDROOM + 3.5 BATH

Elevation A - 2,305 sq. ft.

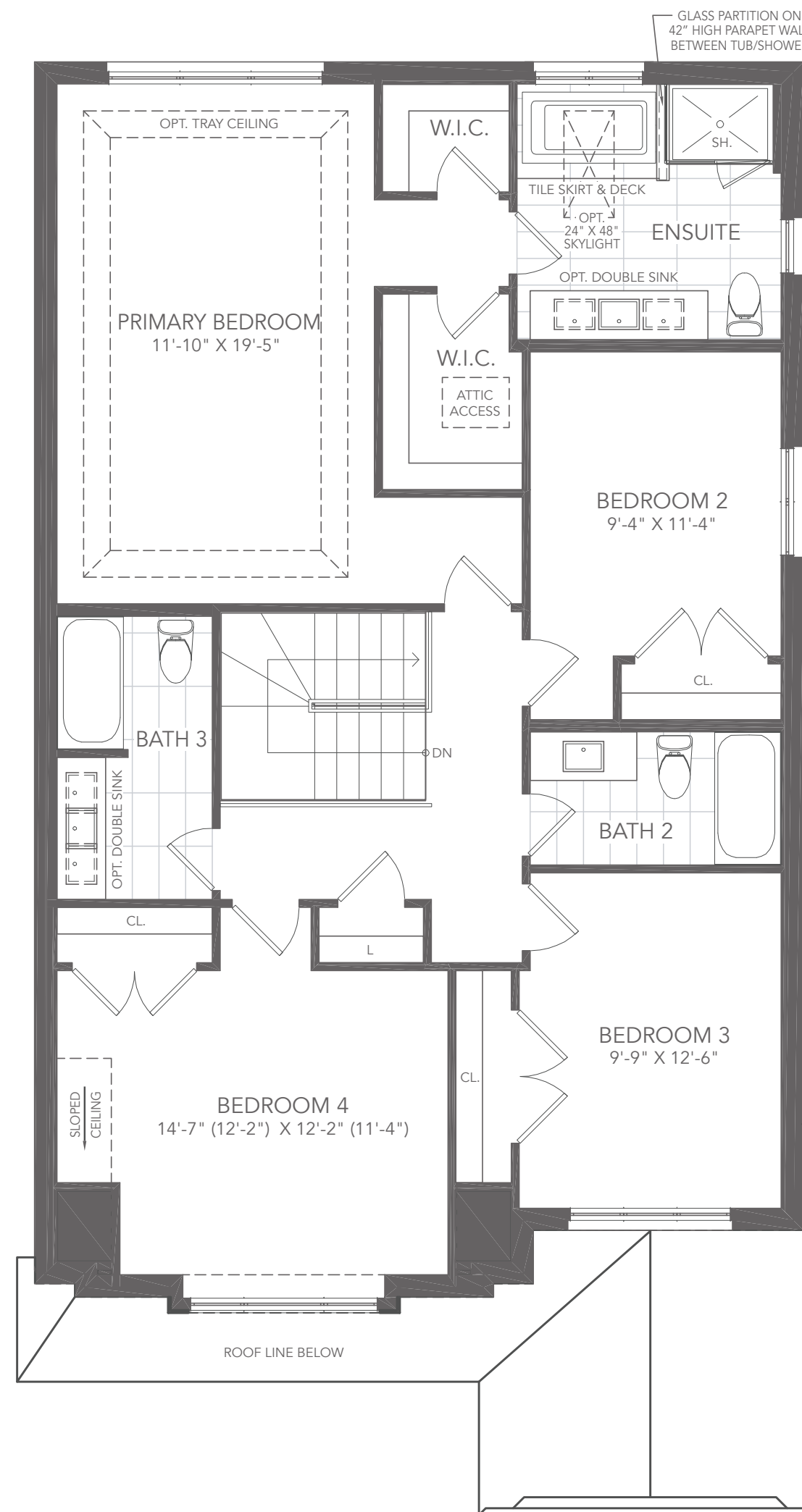
MP36-03



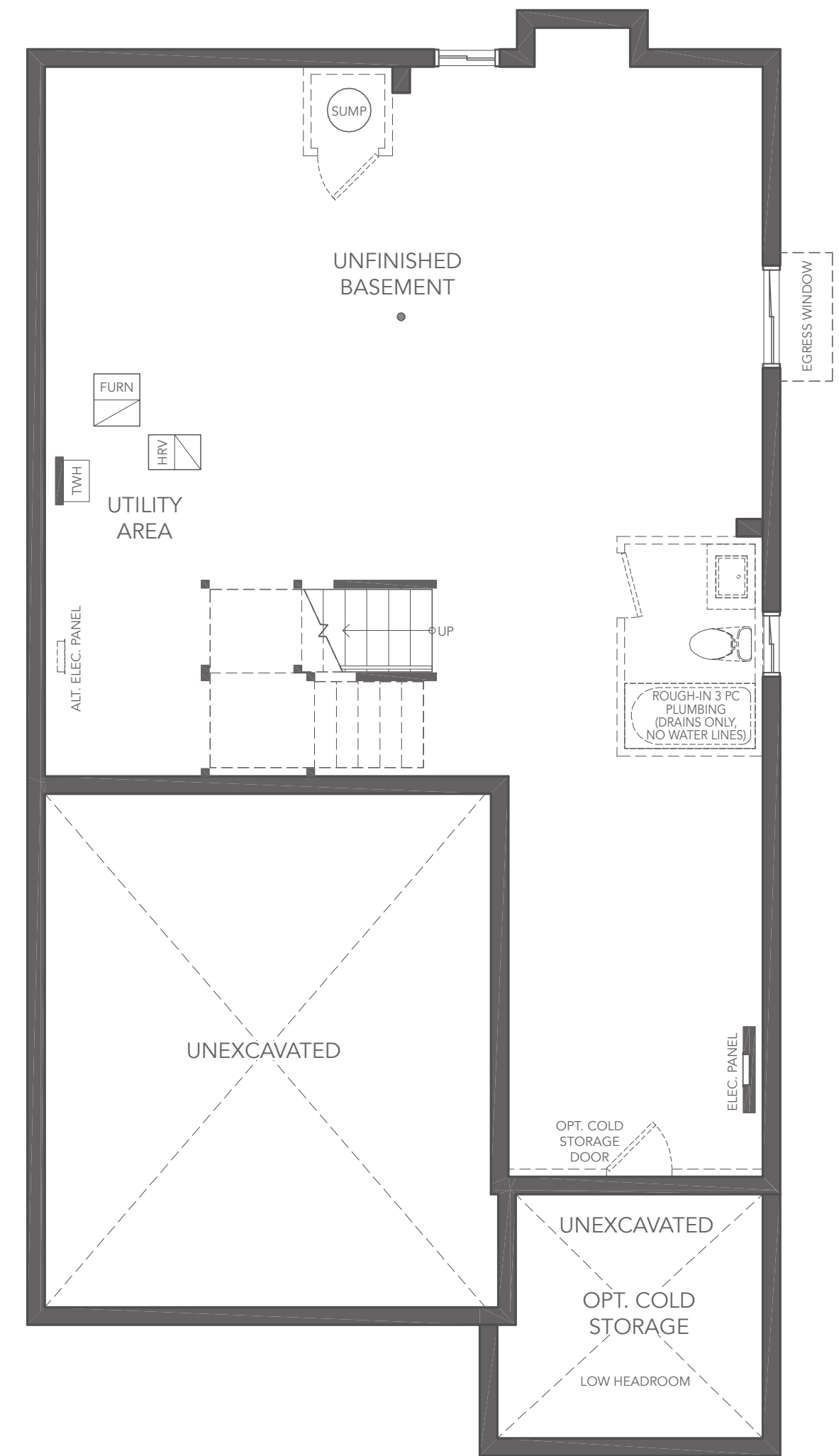
OPT. DOUBLE FRONT DOOR A



GROUND FLOOR PLAN A



SECOND FLOOR PLAN A



BASEMENT PLAN A



All illustrations are artist's concept. All dimensions are approximate. Sizes and specifications are subject to change without notice. Actual usable floor space varies from the stated area. Actual layout may be reverse of layout shown. E. & O.E. May 2024.



36' Singles