

Sinclair

4 BEDROOM + 3.5 BATH

Elevation A - 2,450 sq. ft.

Elevation B - 2,445 sq. ft.

MP36-04



Elevation A - 2,450 sq. ft.



Elevation B - 2,445 sq. ft.

36'
Singles



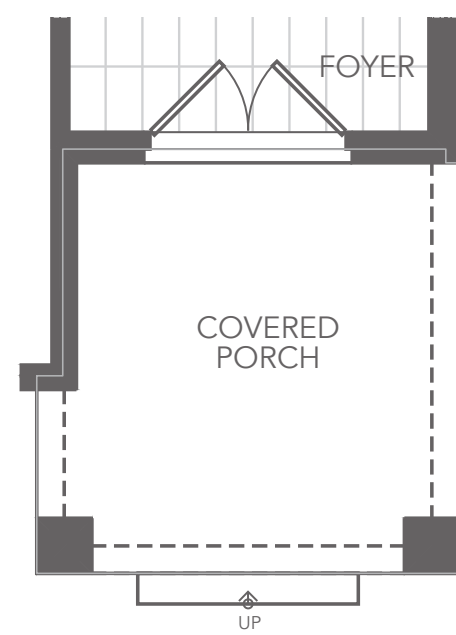
MILTON
VILLAGE

Sinclair

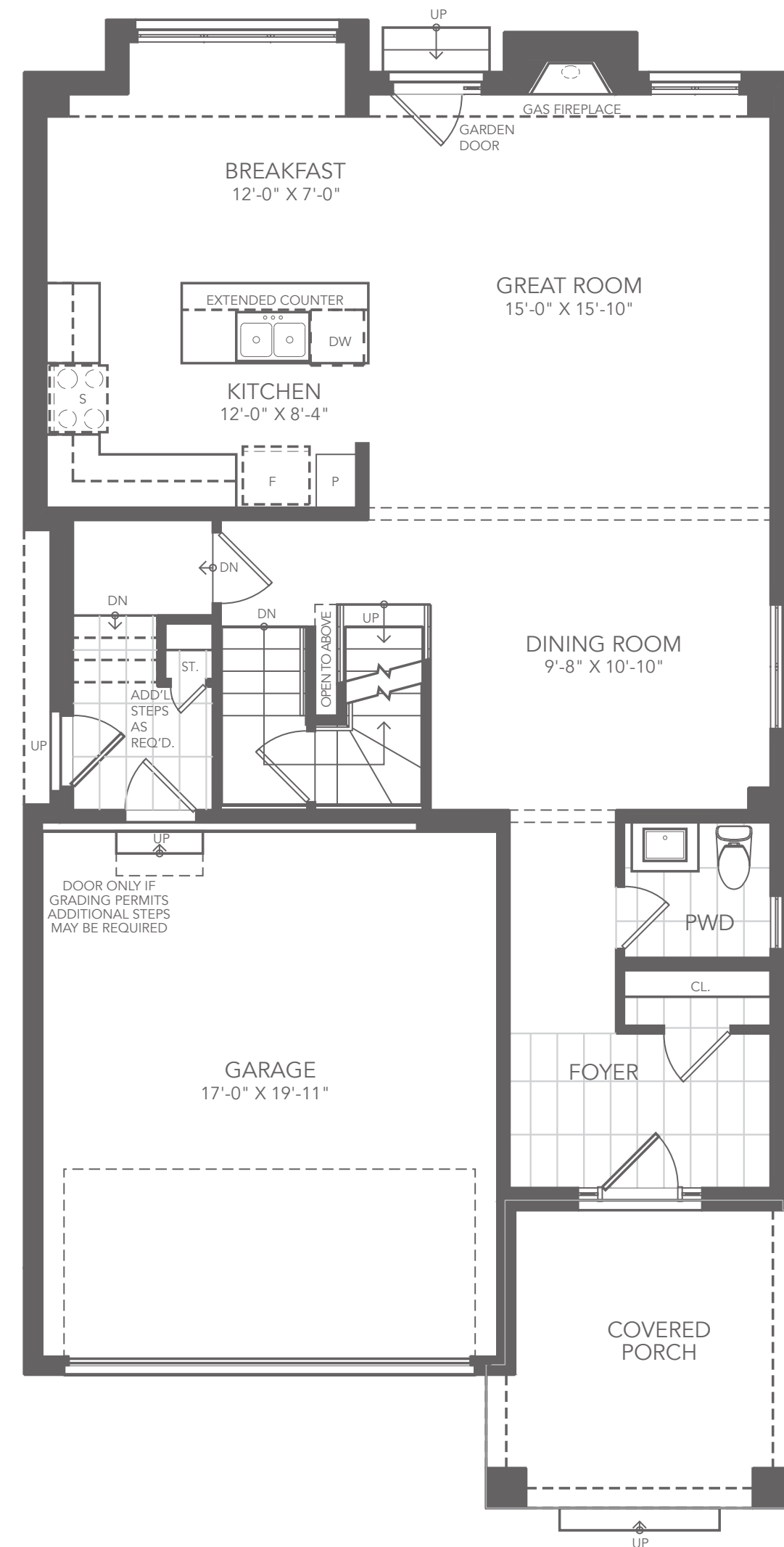
4 BEDROOM + 3.5 BATH

Elevation A - 2,450 sq. ft.

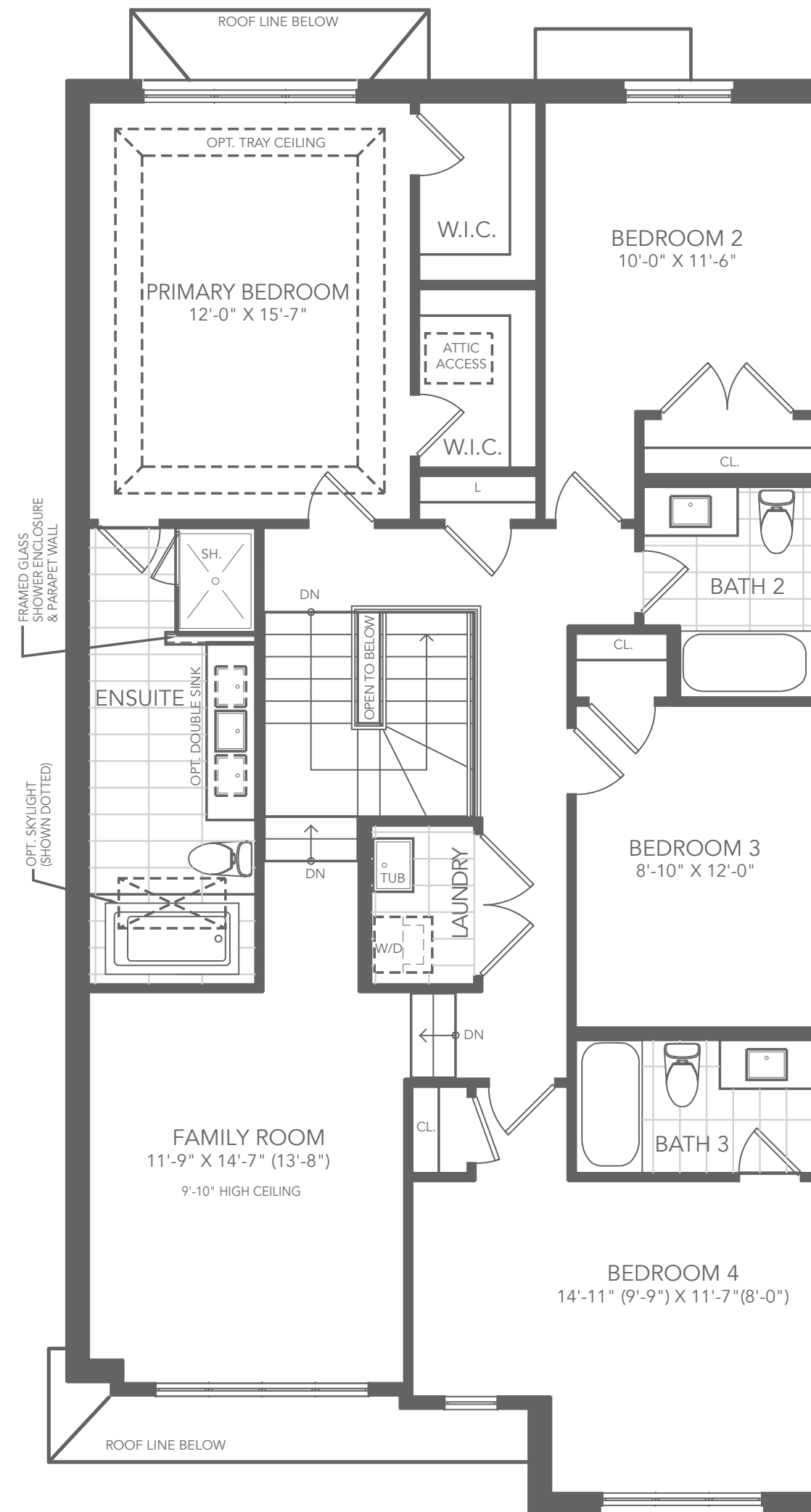
MP36-04



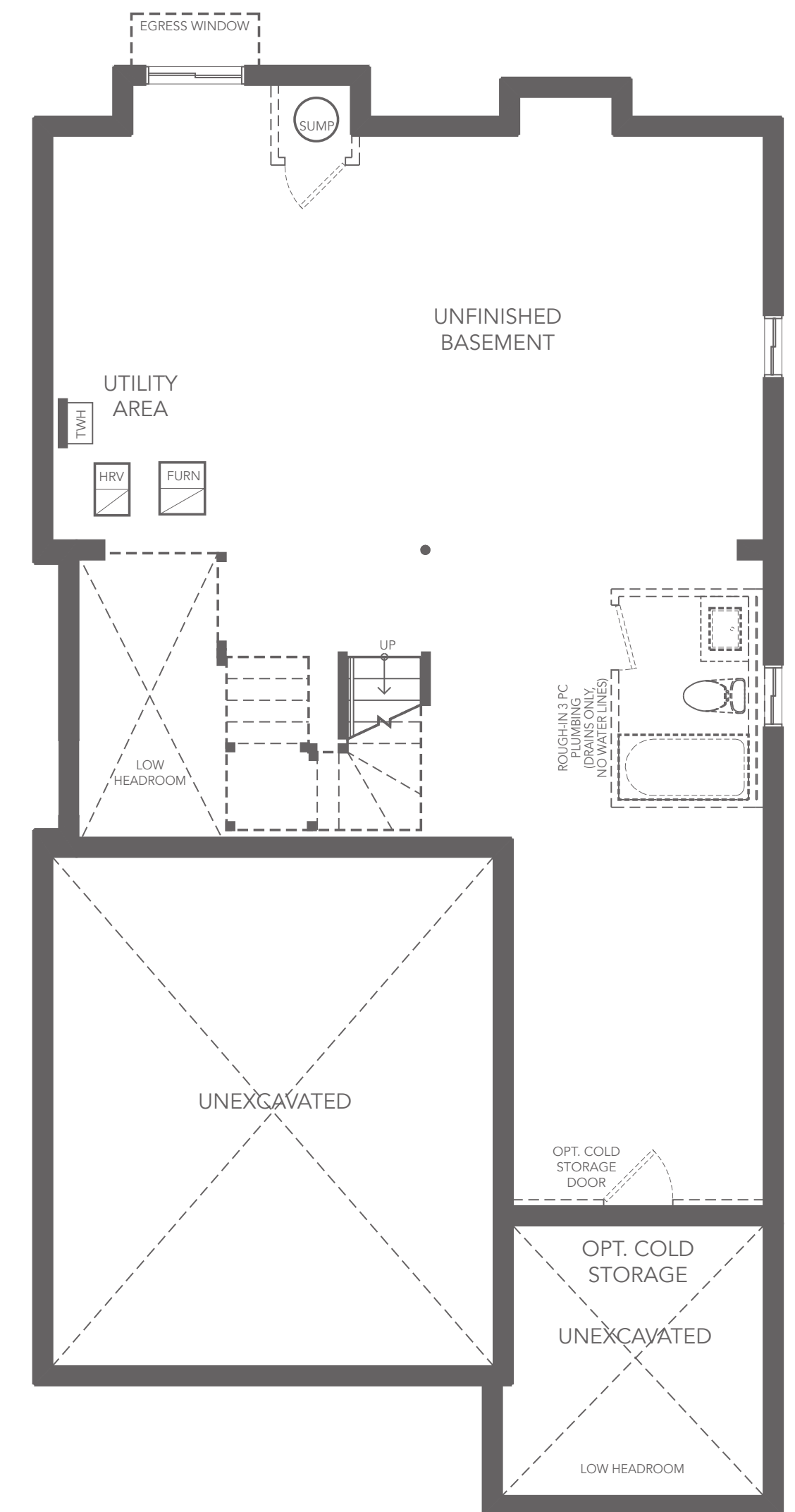
OPT. DOUBLE FRONT DOOR A



GROUND FLOOR PLAN A



SECOND FLOOR PLAN A



BASEMENT PLAN A



All illustrations are artist's concept. All dimensions are approximate. Sizes and specifications are subject to change without notice. Actual usable floor space varies from the stated area. Actual layout may be reverse of layout shown. E. & O.E. May 2024.



36' Singles