

Spruce

4 BEDROOM + 2.5 BATH

Elevation A - 2,250 sq. ft.

Elevation B - 2,245 sq. ft.

MP31-04



Elevation A - 2,250 sq. ft.



Elevation B - 2,245 sq. ft.

31'
Singles



MILTON
VILLAGE

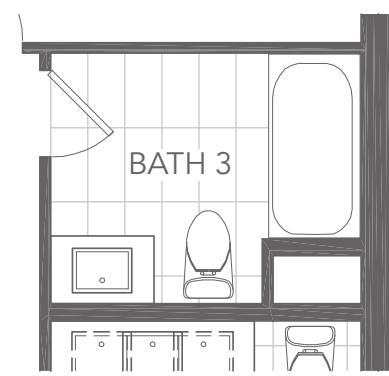
GREAT GULF

Spruce

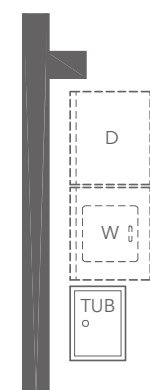
4 BEDROOM + 2.5 BATH

Elevation A - 2,250 sq. ft.

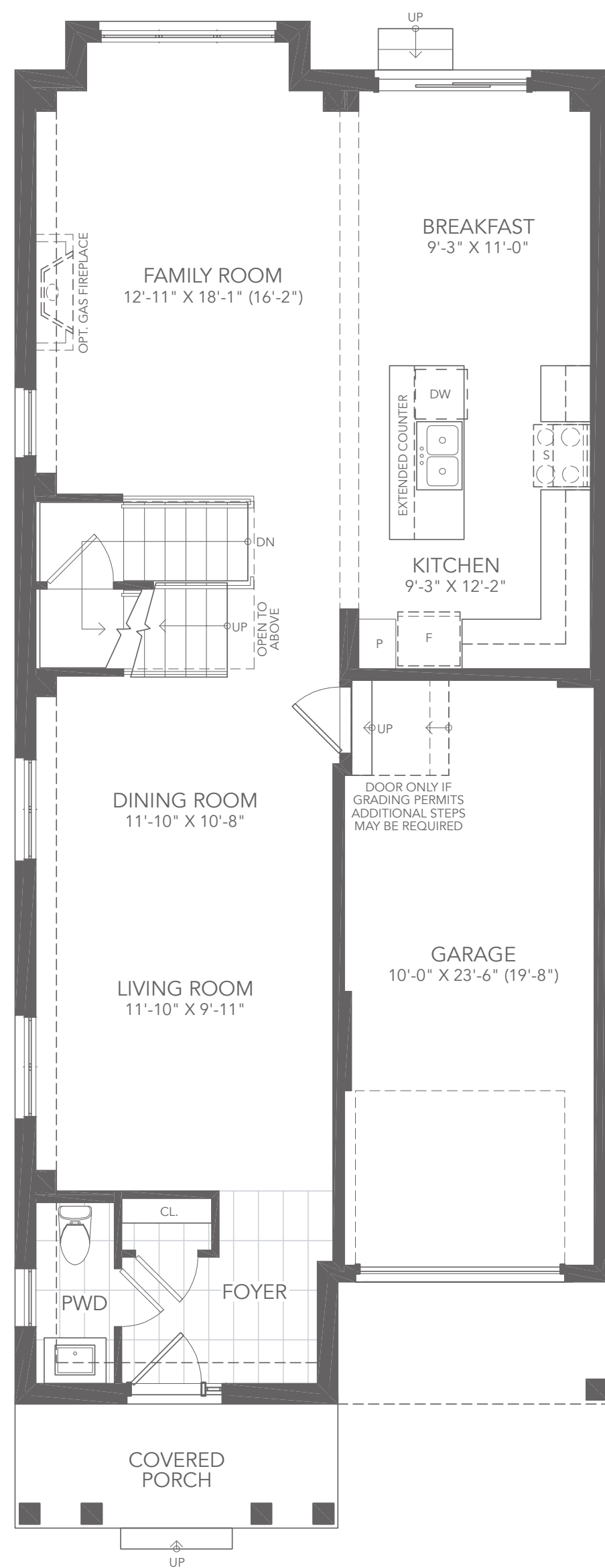
MP31-04



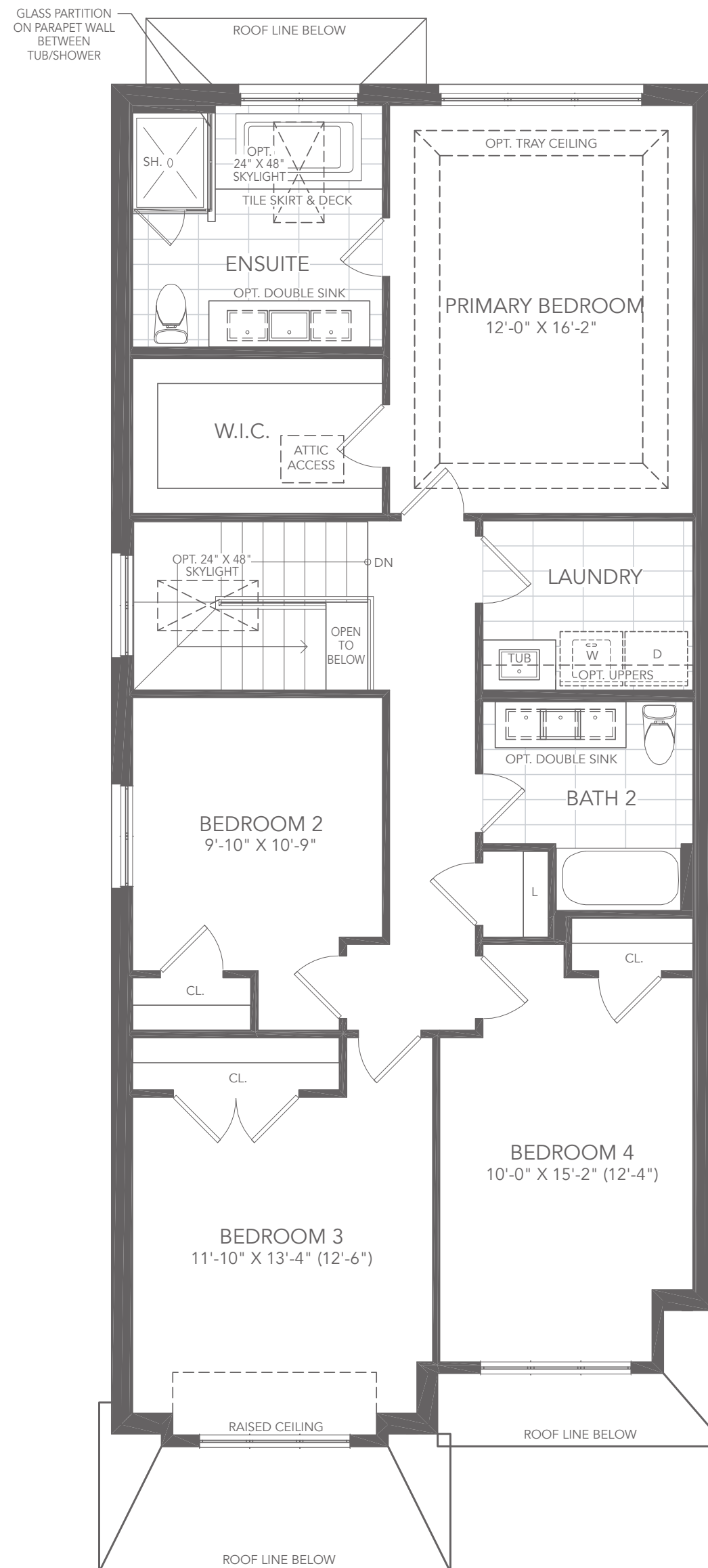
OPT. 3RD BATH IN LIEU OF LAUNDRY A



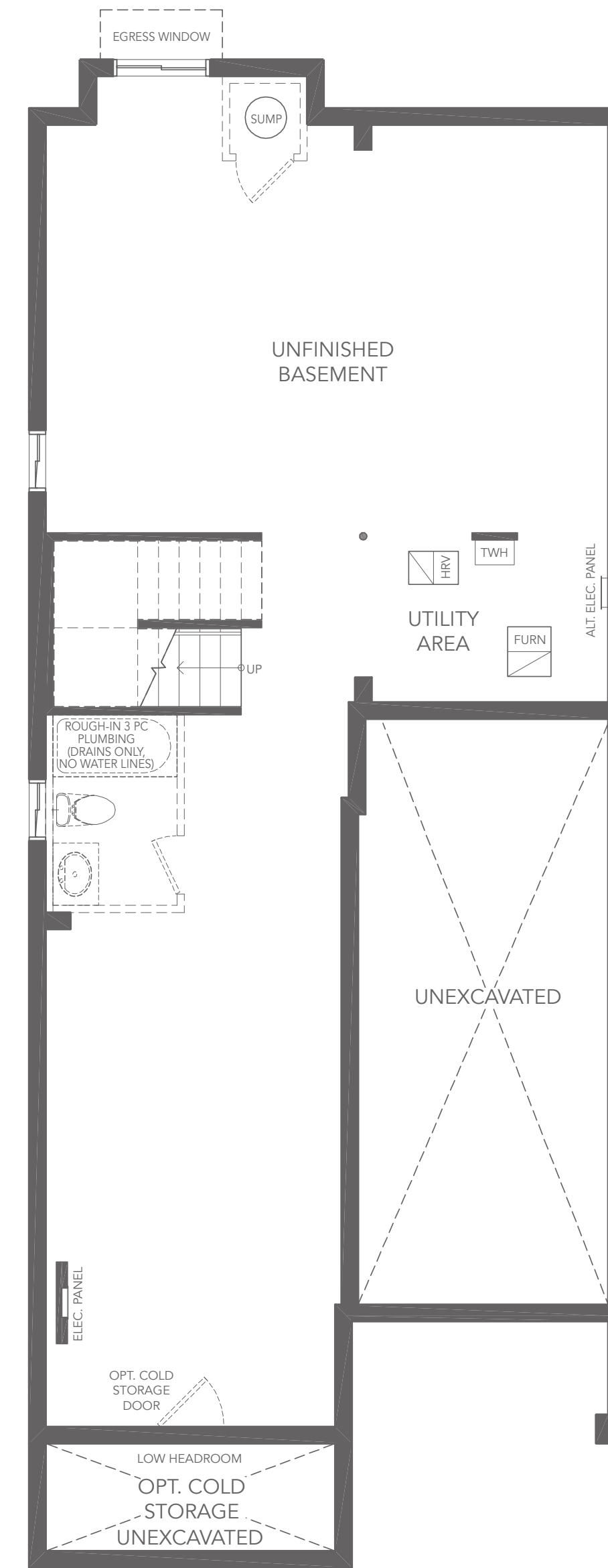
OPT. LAUNDRY FOR OPT. 3RD BATH IN LIEU OF LAUNDRY A



GROUND FLOOR PLAN A



SECOND FLOOR PLAN A



BASEMENT PLAN A

All illustrations are artist's concept. All dimensions are approximate. Sizes and specifications are subject to change without notice. Actual usable floor space varies from the stated area. Actual layout may be reverse of layout shown. E. & O.E. May 2024.



31' Singles