

Fay

5 BEDROOM + 4.5 BATH + DEN

Elevation A - 4,360 sq. ft.

Elevation B - 4,370 sq. ft.

Elevation C - 4,350 sq. ft.

Elevation D - 4,360 sq. ft.

ALL ELEVATIONS INCLUDE 975 SQ. FT.
OF FINISHED BASEMENT

MP45-04

fullhouse
COLLECTION

45'
Singles



**MILTON
VILLAGE**



Elevation B - 4,370 sq. ft.



Elevation A - 4,360 sq. ft.

Fay

5 BEDROOM + 4.5 BATH + DEN

Elevation A - 4,360 sq. ft.

Elevation B - 4,370 sq. ft.

Elevation C - 4,350 sq. ft.

Elevation D - 4,360 sq. ft.

ALL ELEVATIONS INCLUDE 975 SQ. FT. OF FINISHED BASEMENT

MP45-04

fullhouse
COLLECTION

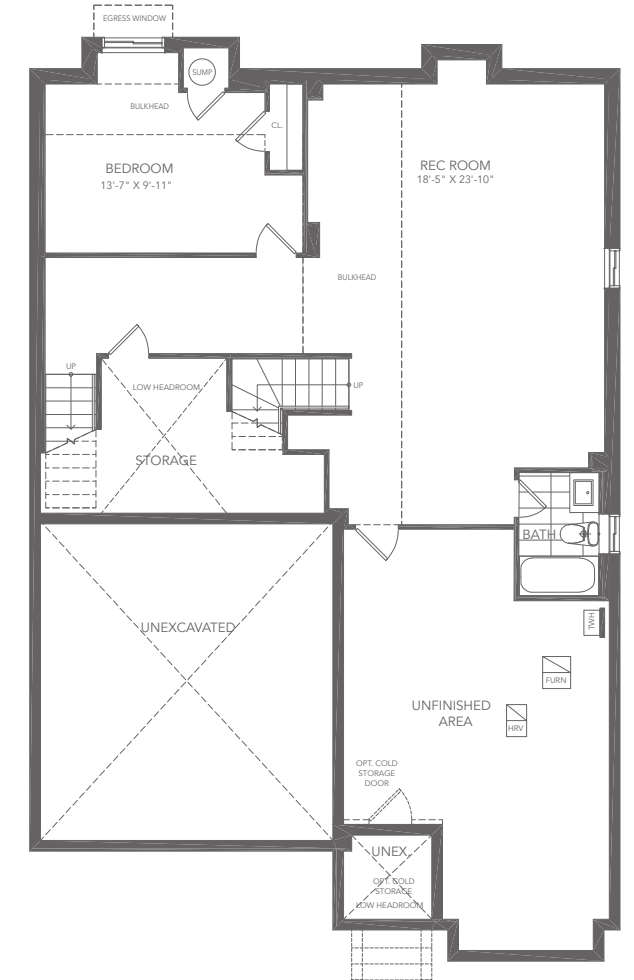
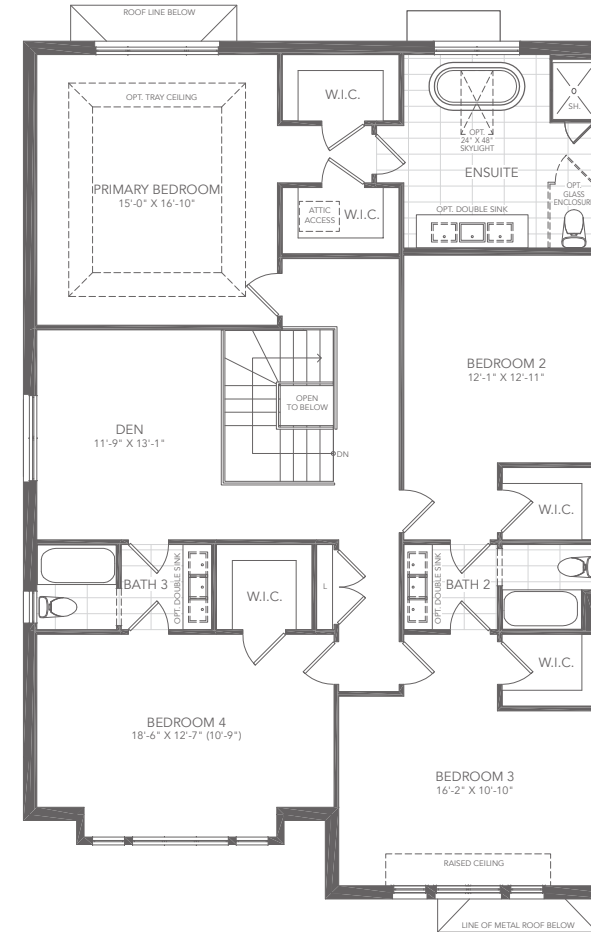
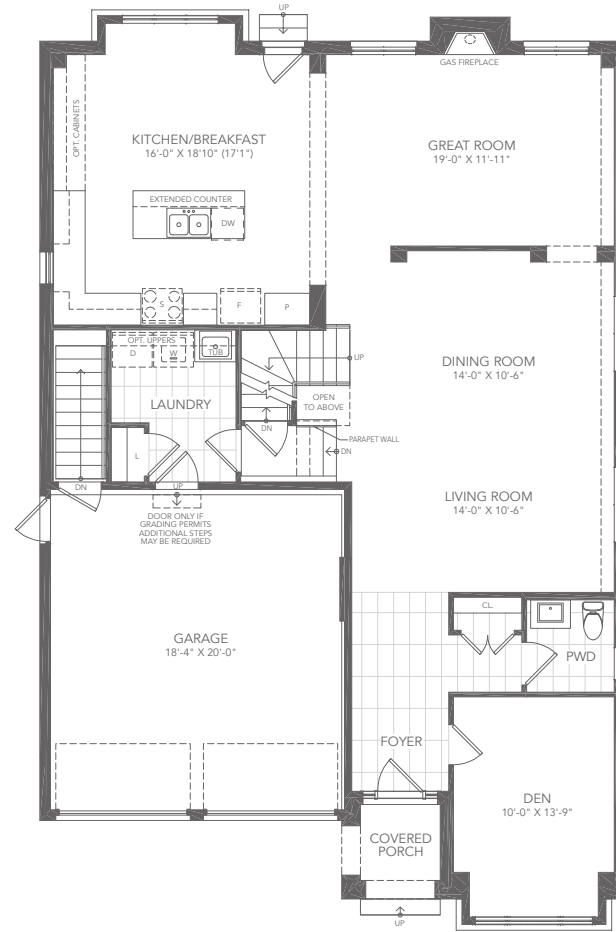
YOUR FULL HOUSE INCLUDES:

Finished basement with:

- Expansive recreation room
- Additional bedroom
- Additional full bathroom
- Additional closet
- Larger basement windows
- Full underslab insulation

*As grading permits. E. & O.E.

GREAT GULF



45' Singles.....

All illustrations are artist's concept. All dimensions are approximate. Sizes and specifications are subject to change without notice. Actual usable floor space varies from the stated area. Actual layout may be reverse of layout shown. E. & O.E. July 2024.