

Sinclair

5 BEDROOM + 4.5 BATH

Elevation A - 3,040 sq. ft.

Elevation B - 3,035 sq. ft.

ALL ELEVATIONS INCLUDE 590 SQ. FT.
OF FINISHED BASEMENT

MP36-04

fullhouse
COLLECTION

36'
Singles



MILTON
VILLAGE



Elevation B - 3,035 sq. ft.



Elevation A - 3,040 sq. ft.

Sinclair

5 BEDROOM + 4.5 BATH

Elevation A - 3,040 sq. ft.

Elevation B - 3,035 sq. ft.

ALL ELEVATIONS INCLUDE 590 SQ. FT. OF FINISHED BASEMENT

MP36-04

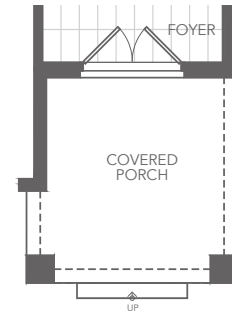
fullhouse
COLLECTION

YOUR FULL HOUSE INCLUDES:

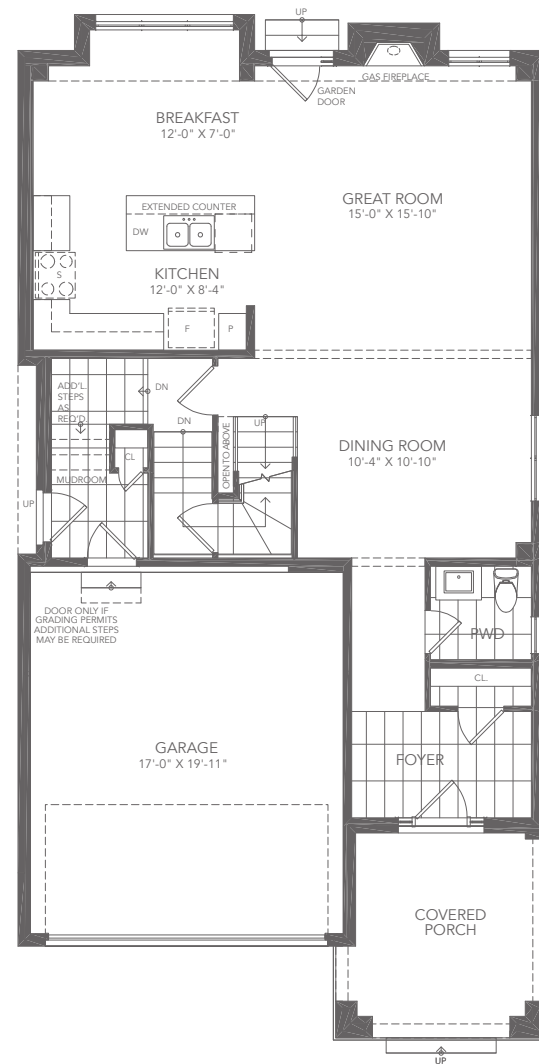
Finished basement with:

- Expansive recreation room
- Additional bedroom
- Additional full bathroom
- Additional closet
- Larger basement windows
- Full underslab insulation

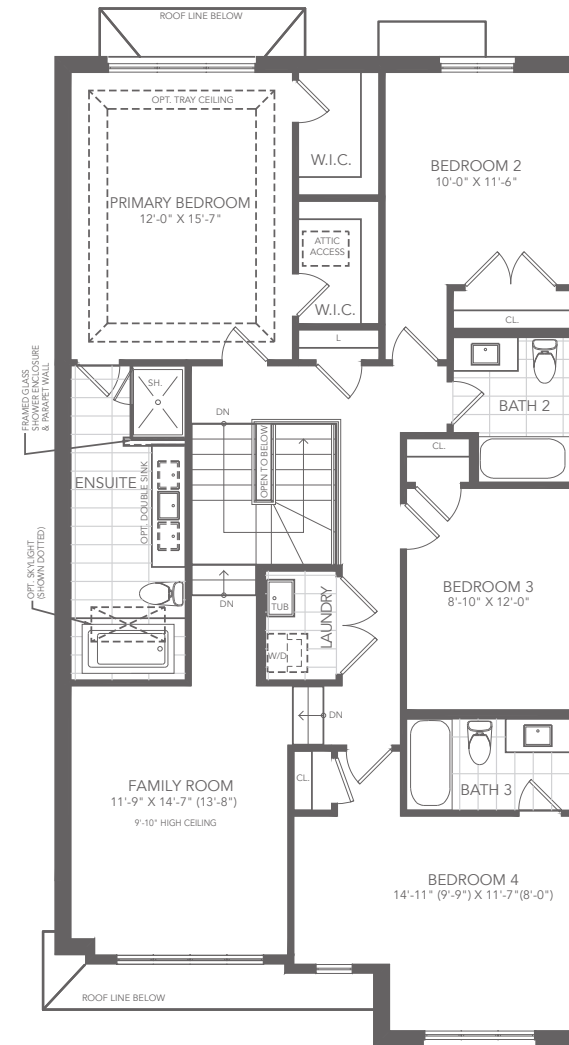
*As grading permits. E. & O.E.



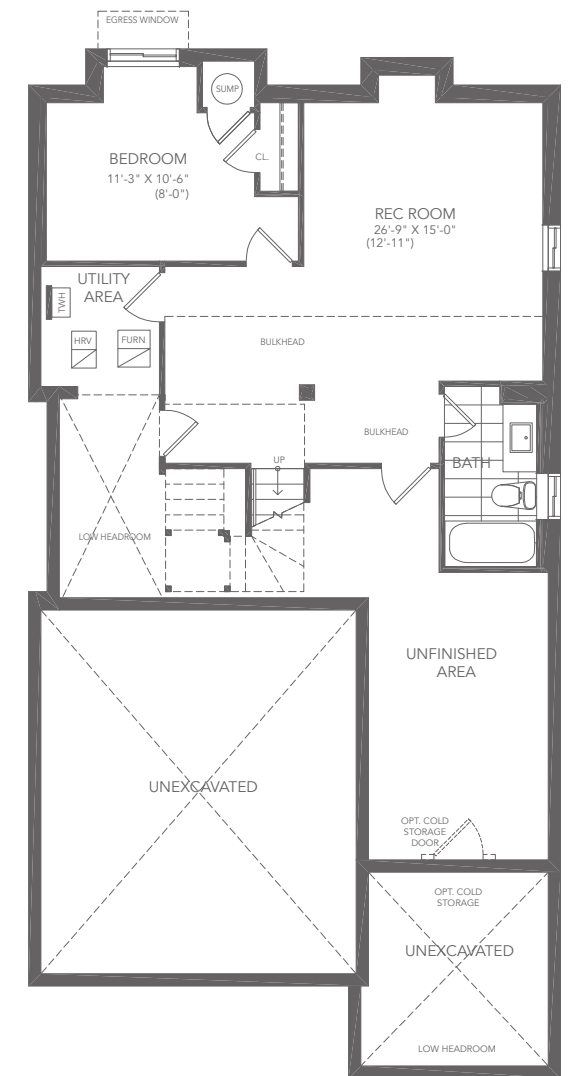
OPT. DOUBLE FRONT DOOR A



GROUND FLOOR PLAN A



SECOND FLOOR PLAN A



BASEMENT PLAN A



All illustrations are artist's concept. All dimensions are approximate. Sizes and specifications are subject to change without notice. Actual usable floor space varies from the stated area. Actual layout may be reverse of layout shown. E. & O.E. July 2024.

36' Singles.....