

Spruce

5 BEDROOM + 3.5 BATH

Elevation A - 2,820 sq. ft.

Elevation B - 2,815 sq. ft.

ALL ELEVATIONS INCLUDE 570 SQ. FT.
OF FINISHED BASEMENT

MP31-04

fullhouse
COLLECTION

31'
Singles



MILTON
VILLAGE



Elevation B - 2,815 sq. ft.



Elevation A - 2,820 sq. ft.

Spruce

5 BEDROOM + 3.5 BATH

Elevation A - 2,820 sq. ft.

Elevation B - 2,815 sq. ft.

ALL ELEVATIONS INCLUDE 570 SQ. FT. OF FINISHED BASEMENT

MP31-04

fullhouse
COLLECTION

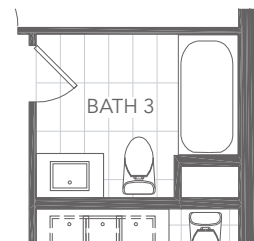
YOUR FULL HOUSE INCLUDES:

Finished basement with:

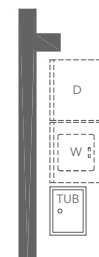
- Expansive recreation room
- Additional bedroom
- Additional full bathroom
- Additional closet
- Larger basement windows
- Full underslab insulation

*As grading permits. E. & O.E.

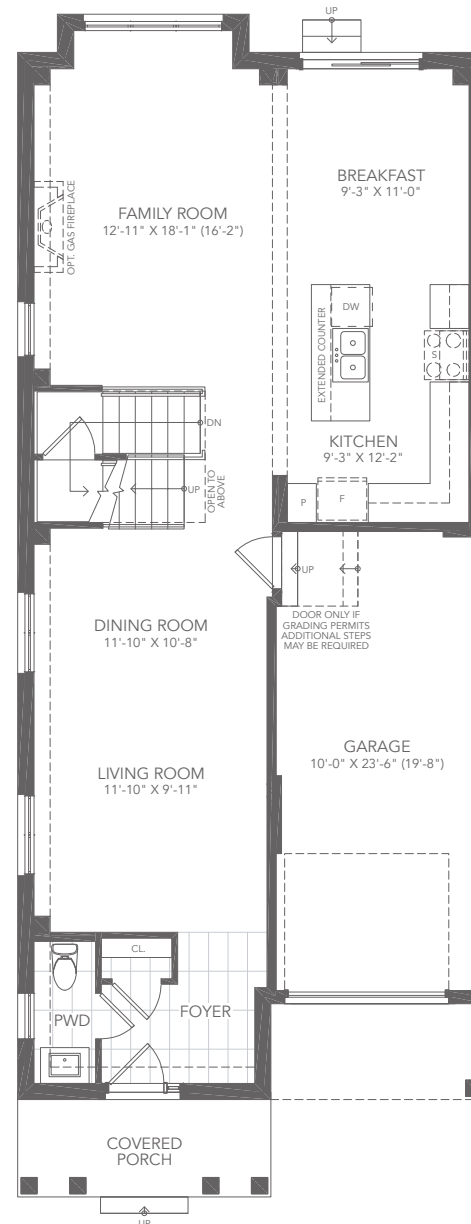
 GREAT GULF



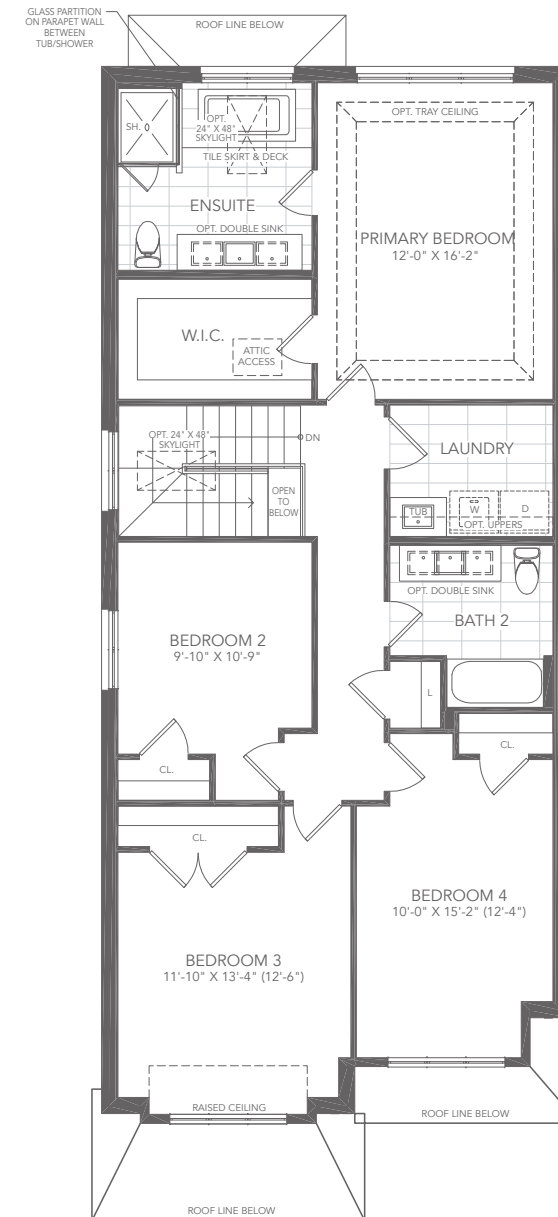
OPT. 3RD BATH
IN LIEU OF LAUNDRY A



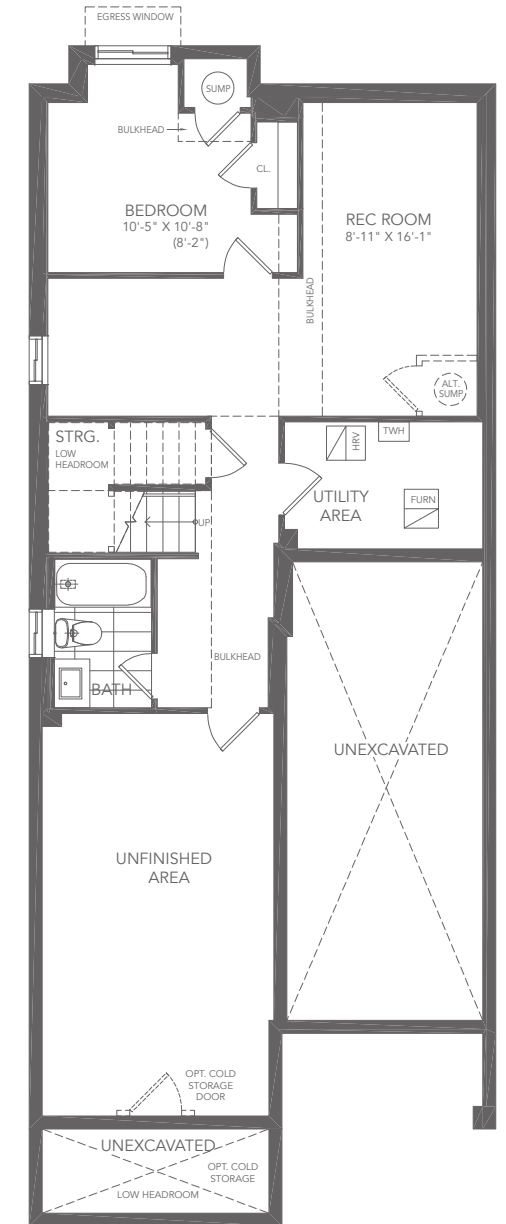
OPT. LAUNDRY FOR OPT. 3RD
BATH IN LIEU OF LAUNDRY A



GROUND FLOOR PLAN A



SECOND FLOOR PLAN A



BASEMENT PLAN A

All illustrations are artist's concept. All dimensions are approximate. Sizes and specifications are subject to change without notice. Actual usable floor space varies from the stated area. Actual layout may be reverse of layout shown. E. & O.E. July 2024.

31' Singles