



*The Ivy*  
5 Bedroom + 4.5 Bath  
MODEL BT36-3

**fullhouse**  
COLLECTION

Elevation A – 2,795 sq. ft.  
Elevation B – 2,780 sq. ft.  
Elevation C – 2,815 sq. ft.  
All elevations include 665 sq. ft.  
of finished basement

36'



Elevation A 2,795 sq. ft.



Elevation B 2,780 sq. ft.



Elevation C 2,815 sq. ft.



# The Ivy

BT36-3

Elevation A

2,795 sq. ft.

Elevations include 665 sq. ft. of finished basement

## fullhouse COLLECTION

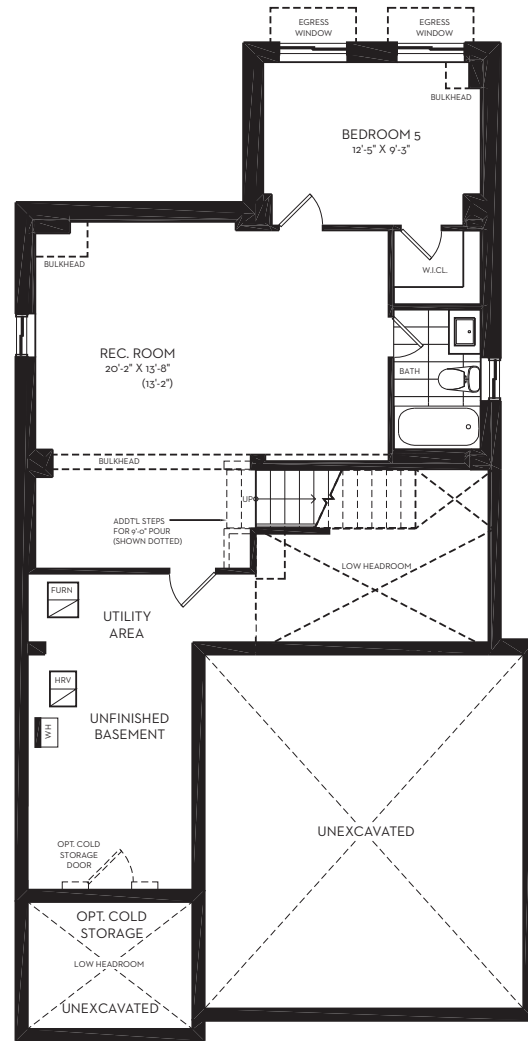
As part of Great Gulf's commitment to always deliver greater value, we bring you our new, exclusive and unprecedented collection of homes.

### YOUR FULL HOUSE INCLUDES:

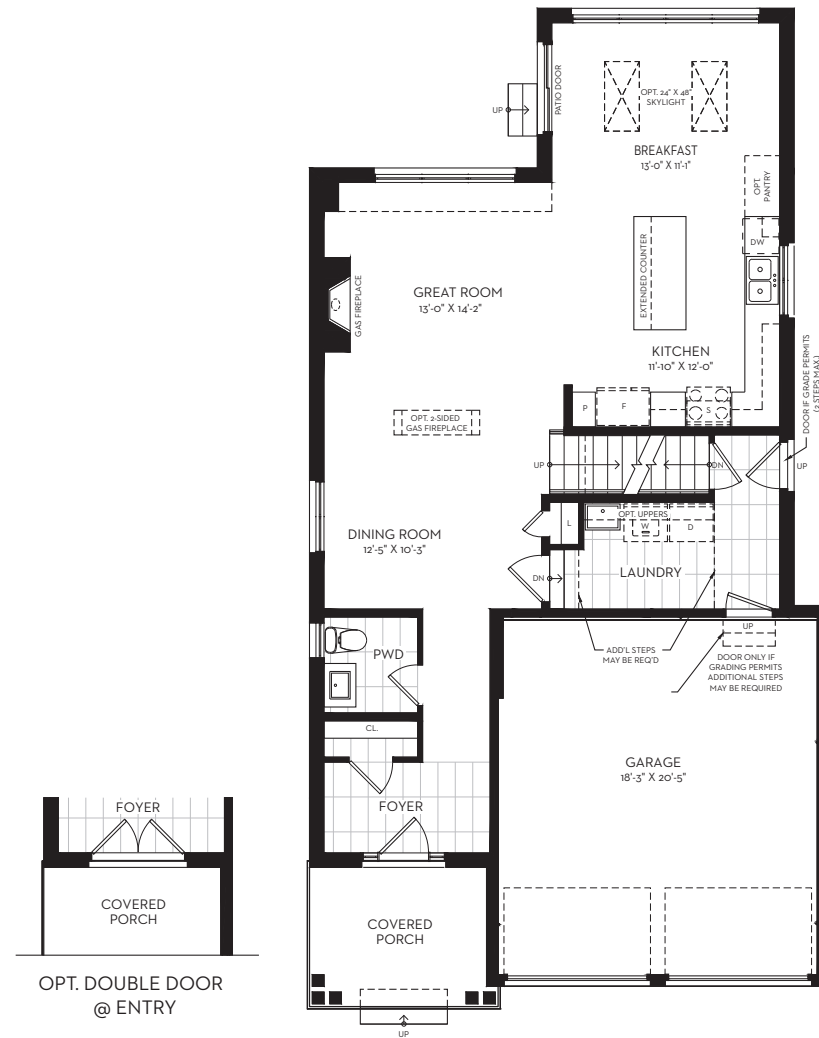
Finished basement with:

- Expansive recreation room
- Additional 5th bedroom
- Additional full bathroom
- Additional walk in closet
- Larger basement windows
- Full underslab insulation

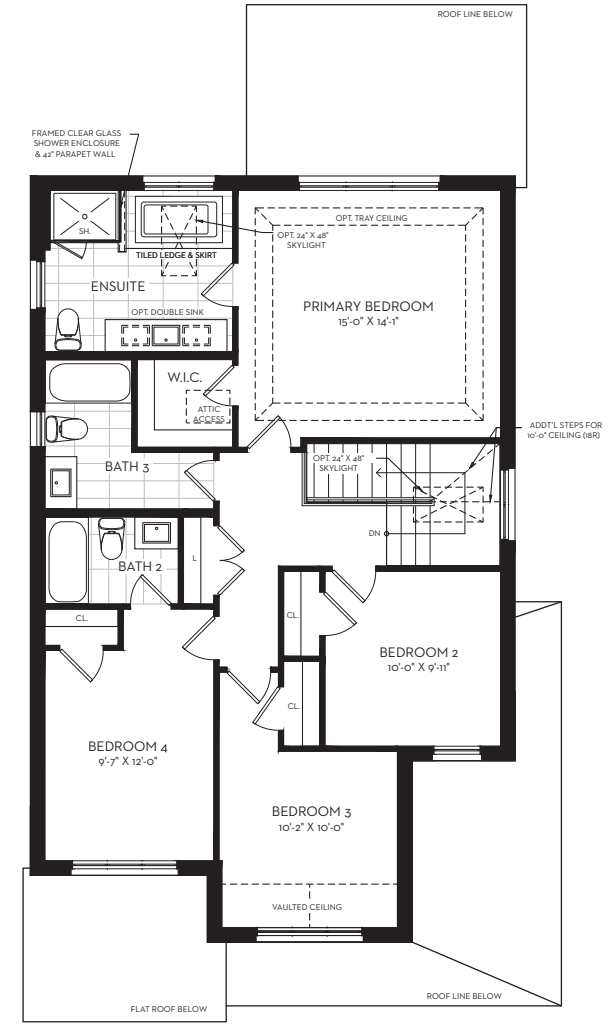
\*As grading permits. E. & O.E.



BASEMENT PLAN



GROUND FLOOR PLAN



SECOND FLOOR PLAN