

34'
SINGLES



ELEVATION A - 2,815 SQ. FT.



ELEVATION B - 2,825 SQ. FT.



WESTFIELD

THE STAFFORD

5 BEDROOM
ELEVATION A - 2,815 SQ. FT.
ELEVATION B - 2,825 SQ. FT.
ELEVATION C - 2,830 SQ. FT.

PBR34-12



WESTFIELD

THE STAFFORD

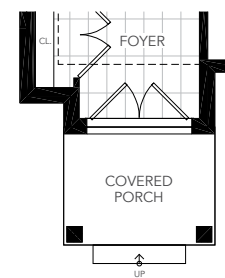
5 BEDROOM

ELEVATION A - 2,815 SQ. FT.

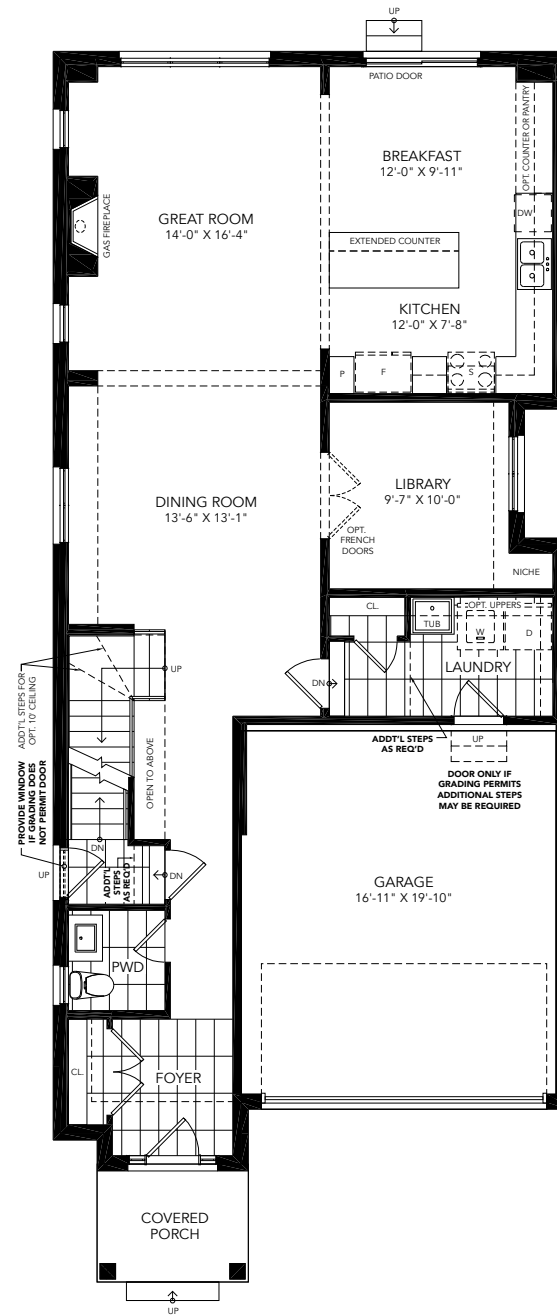
ELEVATION B - 2,825 SQ. FT.

ELEVATION C - 2,830 SQ. FT.

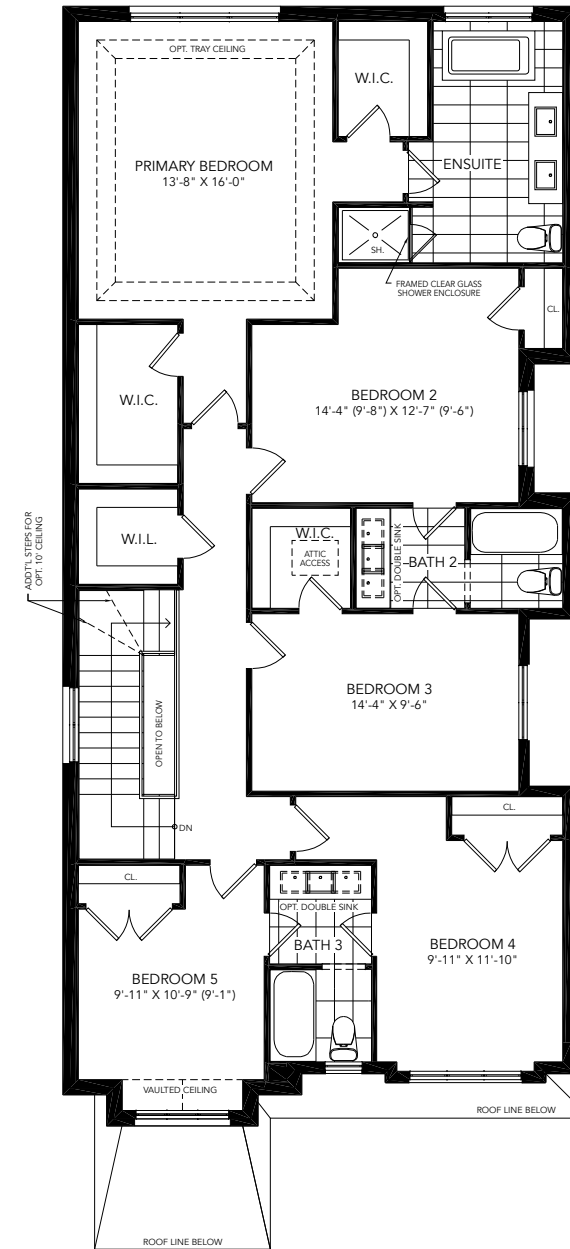
PBR34-12



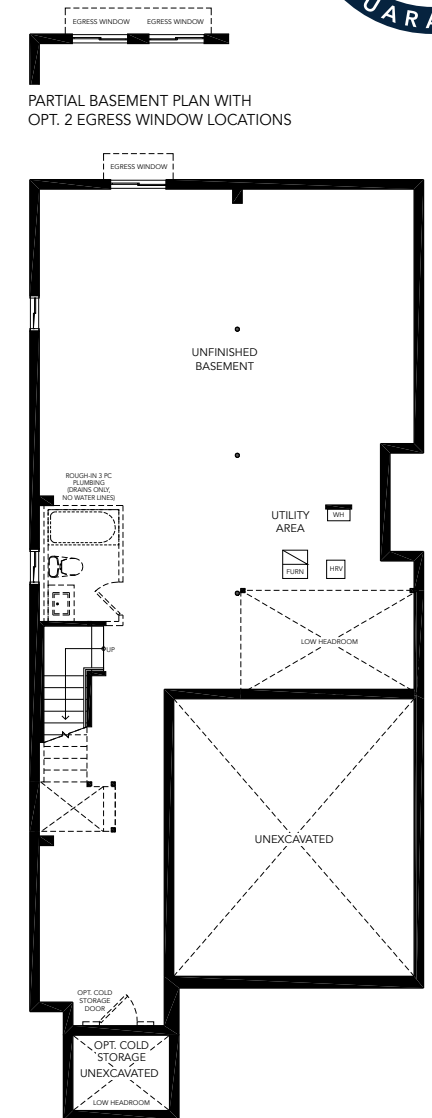
OPT. DOUBLE DOOR ENTRY



GROUND FLOOR A



SECOND FLOOR A



BASEMENT A

All illustrations are artist's concept. All dimensions are approximate. Sizes and specifications are subject to change without notice. Actual usable floor space varies from the stated area. Actual layout may be reverse of layout shown. E. & O. E.