

38'
SINGLES



ELEVATION B - 4,215 SQ. FT.



ELEVATION A - 4,235 SQ. FT.



WESTFIELD

fullhouse
COLLECTION

THE BRISTOL

6 BEDROOM + LOFT
ELEVATION A - 4,235 SQ. FT.
ELEVATION B - 4,215 SQ. FT.

ALL ELEVATIONS INCLUDE
1,025 SQ. FT. OF FINISHED BASEMENT

PBR38-10



WESTFIELD

THE BRISTOL

6 BEDROOM + LOFT
ELEVATION A - 4,235 SQ. FT.
ELEVATION B - 4,215 SQ. FT.

ALL ELEVATIONS INCLUDE
1,025 SQ. FT. OF FINISHED BASEMENT

PBR38-10

fullhouse

COLLECTION

As part of Great Gulf's commitment to always deliver greater value, we bring you our new, exclusive and unprecedented collection of homes.

 GREAT GULF

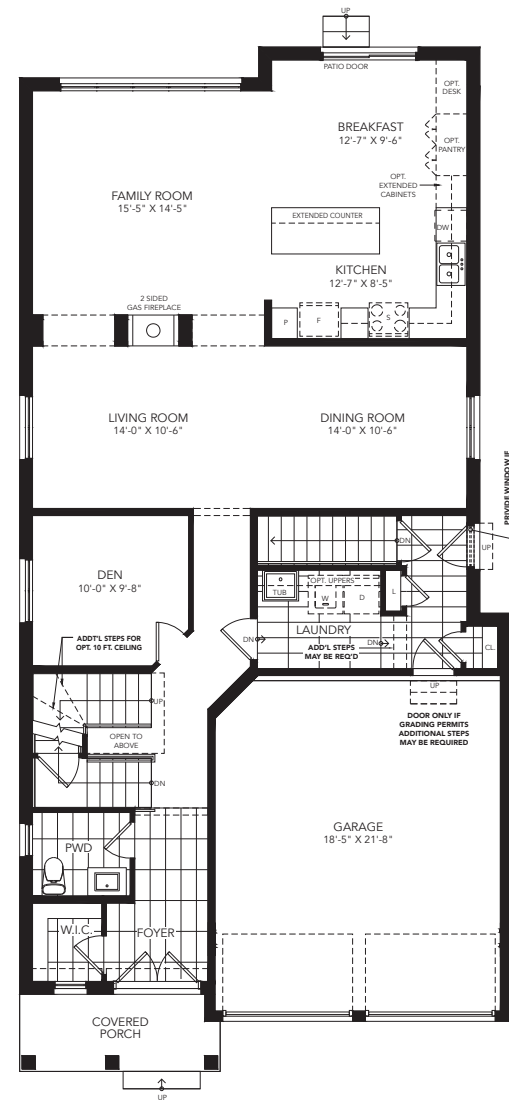


YOUR FULL HOUSE INCLUDES:

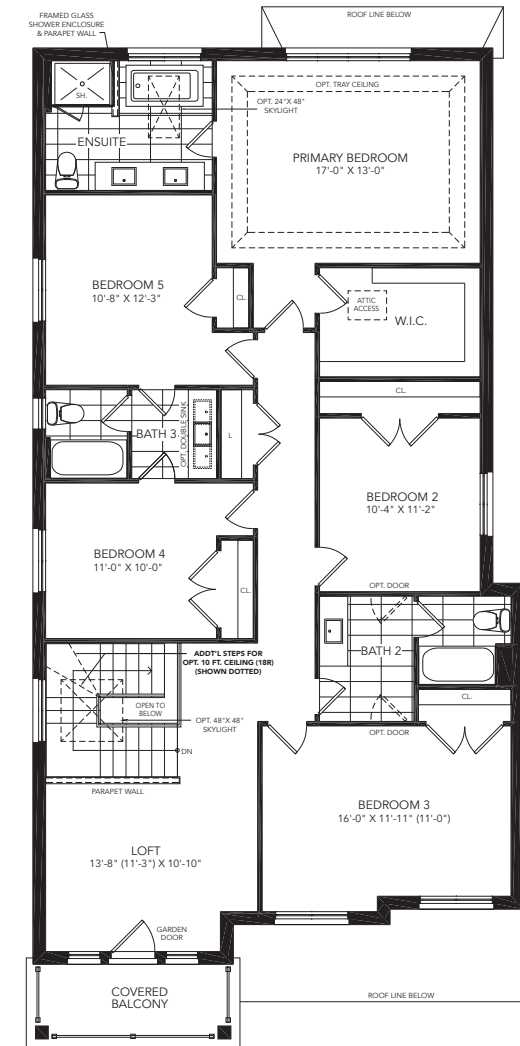
Finished basement with:

- Expansive recreation room
- Additional bedroom
- Additional full bathroom
- Additional walk in closet
- Larger basement windows
- Full underslab insulation

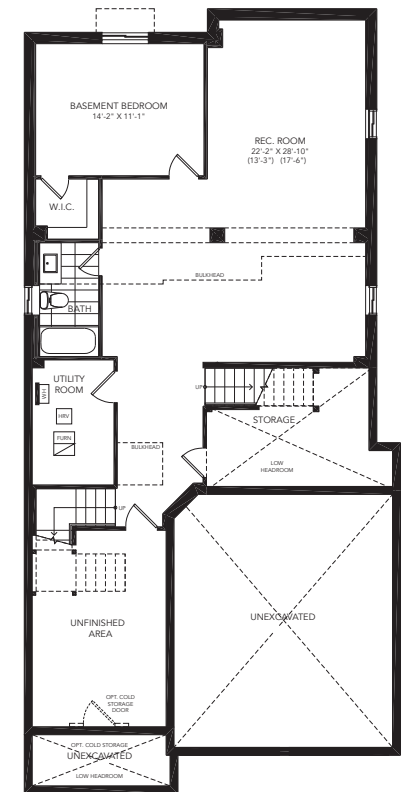
*As grading permits. E. & O.E.



GROUND FLOOR A



SECOND FLOOR A



BASEMENT A

All illustrations are artist's concept. All dimensions are approximate. Sizes and specifications are subject to change without notice. Actual usable floor space varies from the stated area. Actual layout may be reverse of layout shown. E. & O. E.