

38'  
SINGLES



ELEVATION A - 2,955 SQ. FT.



ELEVATION B - 2,955 SQ. FT.



WESTFIELD

---

THE COLESHILL

4 BEDROOM + LOFT  
ELEVATION A - 2,955 SQ. FT.  
ELEVATION B - 2,955 SQ. FT.

PBR38-6

---

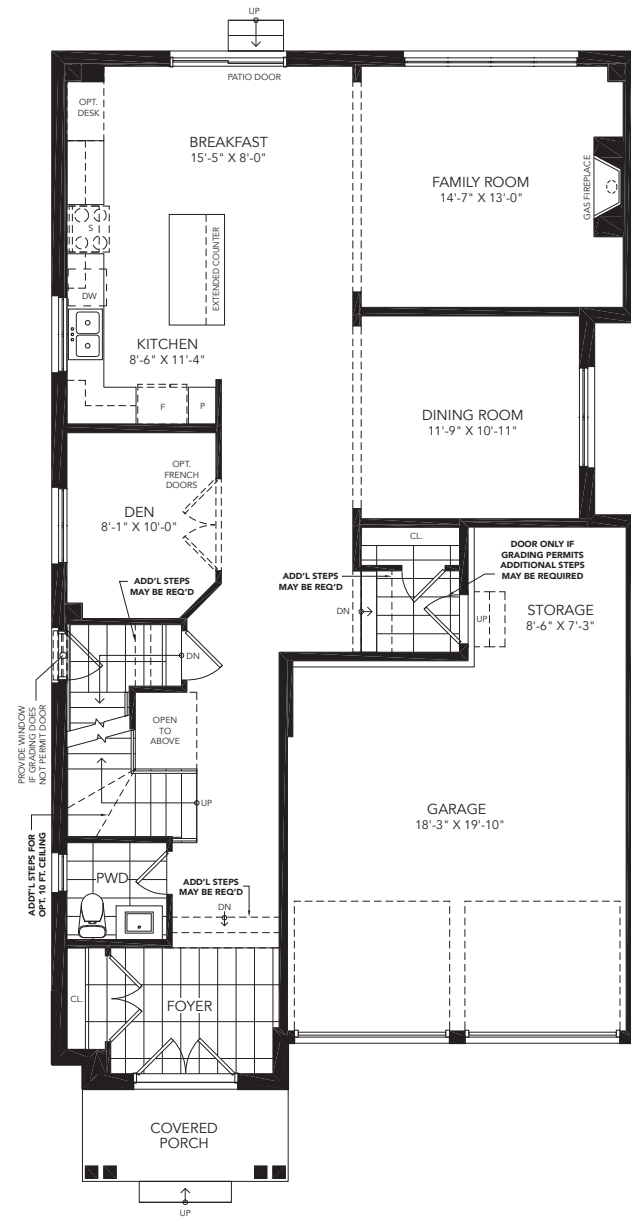


WESTFIELD

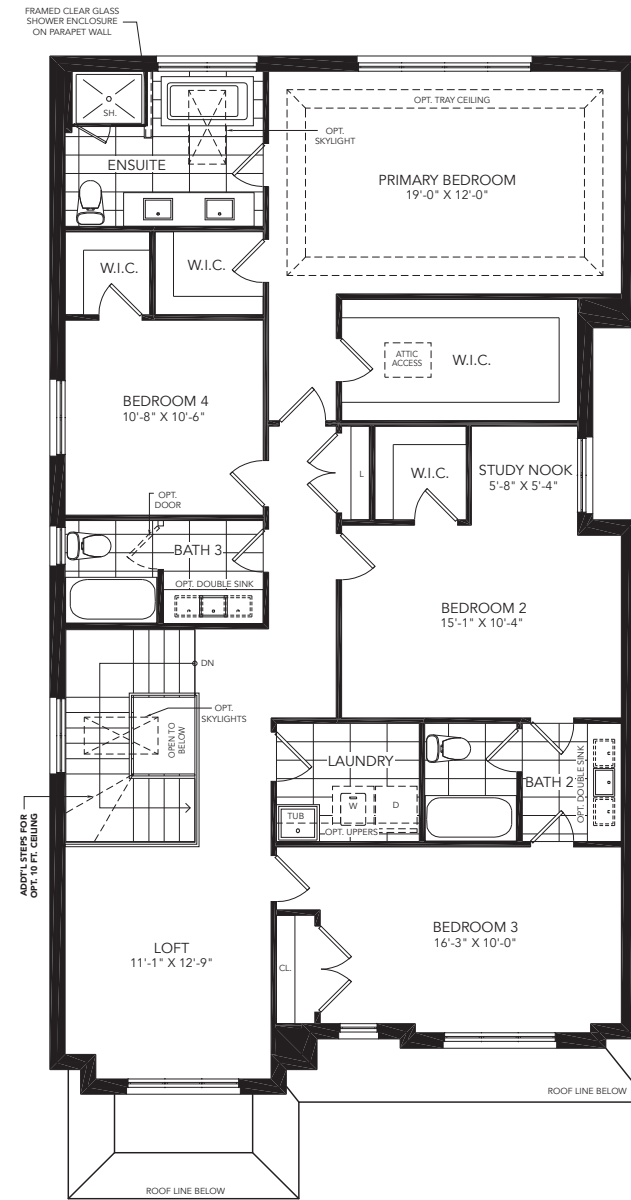
# THE COLESHILL

4 BEDROOM + LOFT  
ELEVATION A - 2,955 SQ. FT.  
ELEVATION B - 2,955 SQ. FT.

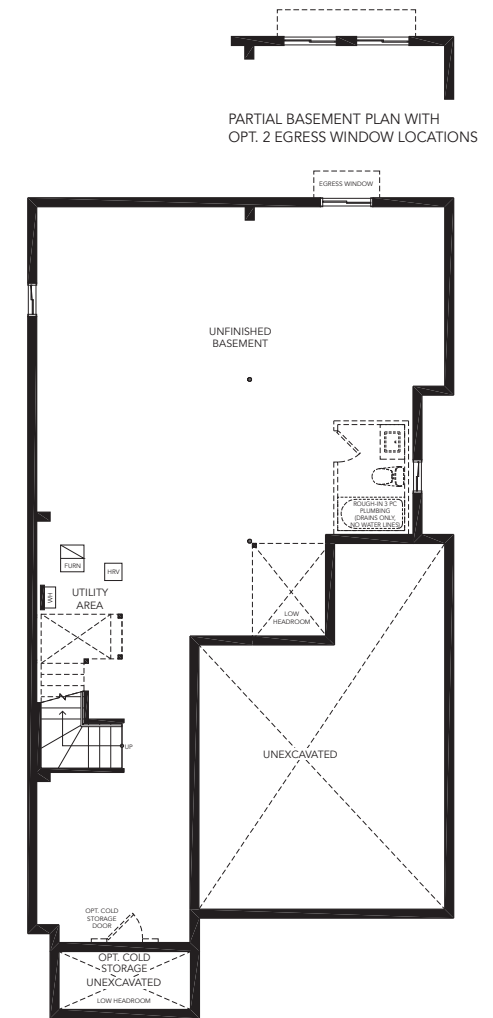
PBR38-6



GROUND FLOOR A



SECOND FLOOR A



BASEMENT A

All illustrations are artist's concept. All dimensions are approximate. Sizes and specifications are subject to change without notice. Actual usable floor space varies from the stated area. Actual layout may be reverse of layout shown. E. & O. E.