

38'
SINGLES



ELEVATION A - 2,830 SQ. FT.



ELEVATION B - 2,830 SQ. FT.



WESTFIELD

THE DOVER

4 BEDROOM + LOFT
ELEVATION A - 2,830 SQ. FT.
ELEVATION B - 2,830 SQ. FT.

PBR38-5

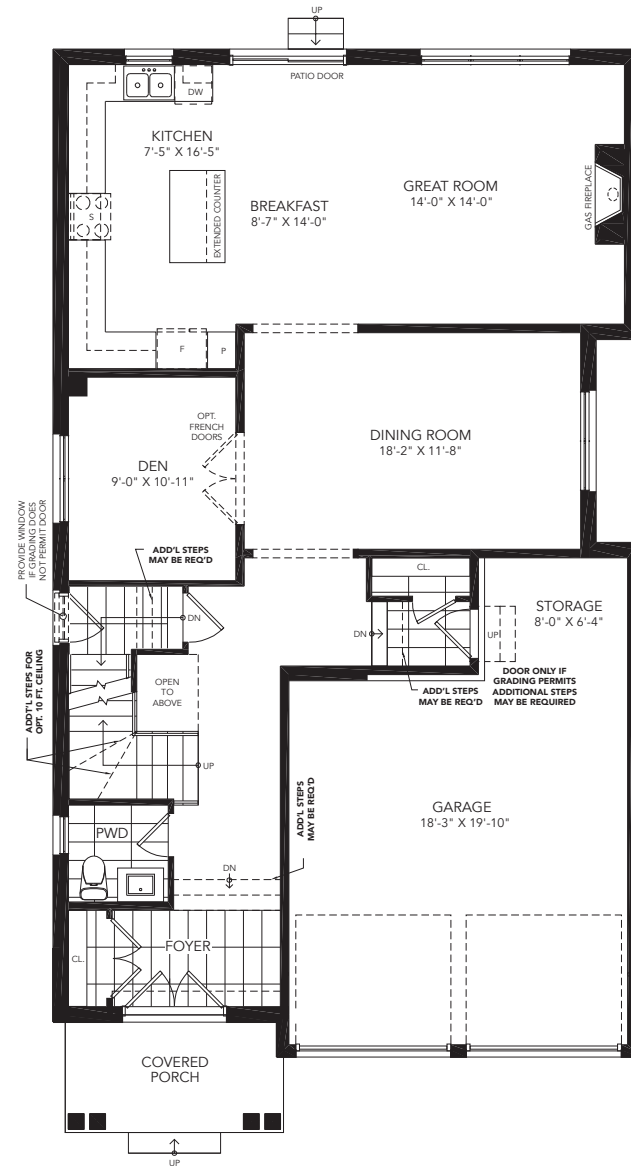


WESTFIELD

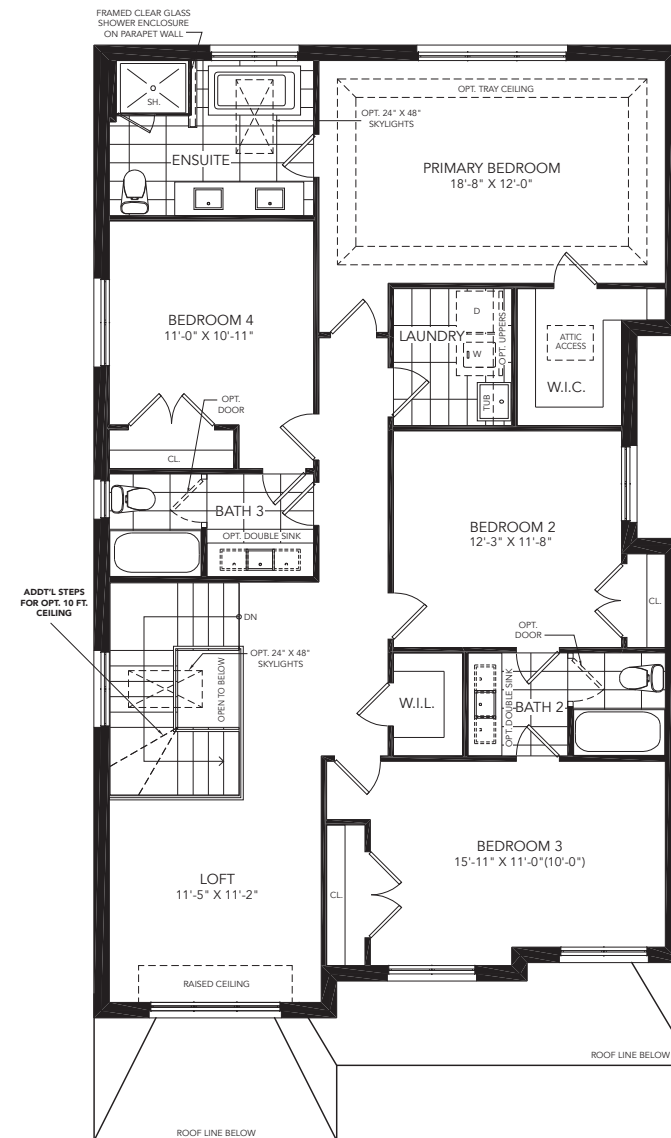
THE DOVER

4 BEDROOM + LOFT
ELEVATION A - 2,830 SQ. FT.
ELEVATION B - 2,830 SQ. FT.

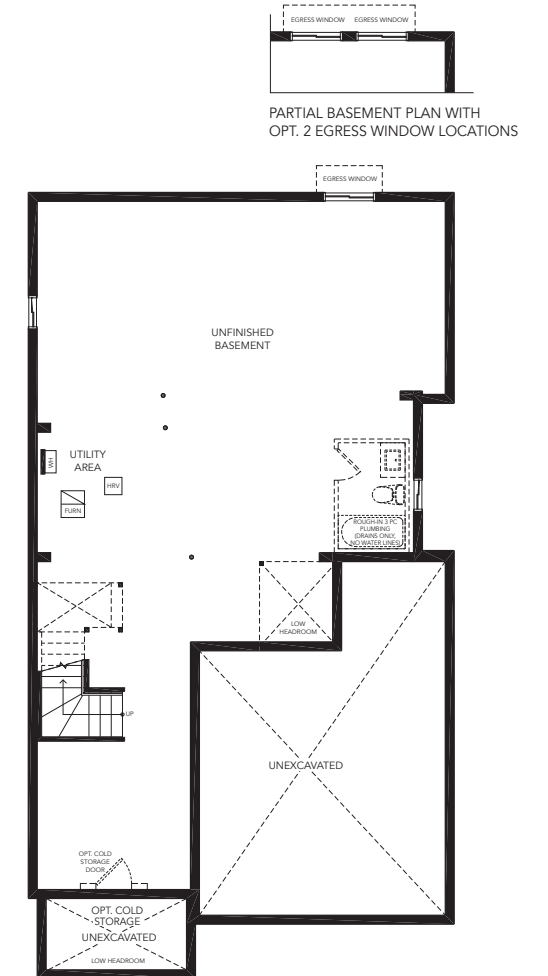
PBR38-5



GROUND FLOOR A



SECOND FLOOR A



BASEMENT A



All illustrations are artist's concept. All dimensions are approximate. Sizes and specifications are subject to change without notice. Actual usable floor space varies from the stated area. Actual layout may be reverse of layout shown. E. & O. E.