

38'  
SINGLES



ELEVATION A - 2,655 SQ. FT.



ELEVATION B - 2,645 SQ. FT.



WESTFIELD

---

THE MARLOW

4 BEDROOM  
ELEVATION A - 2,655 SQ. FT.  
ELEVATION B - 2,645 SQ. FT.

PBR38-14

---

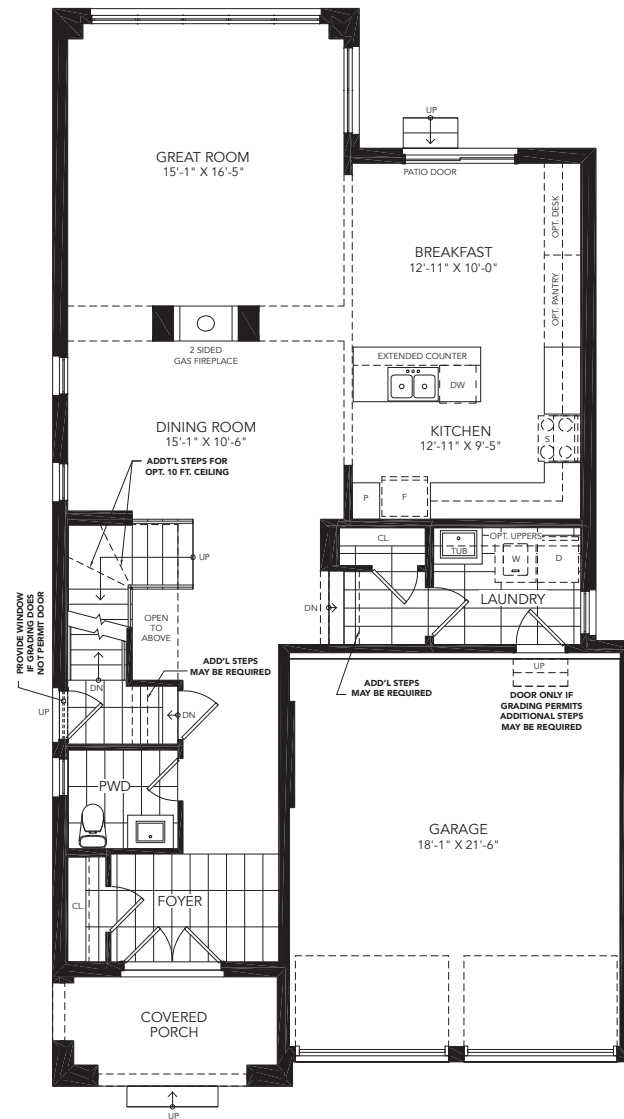


WESTFIELD

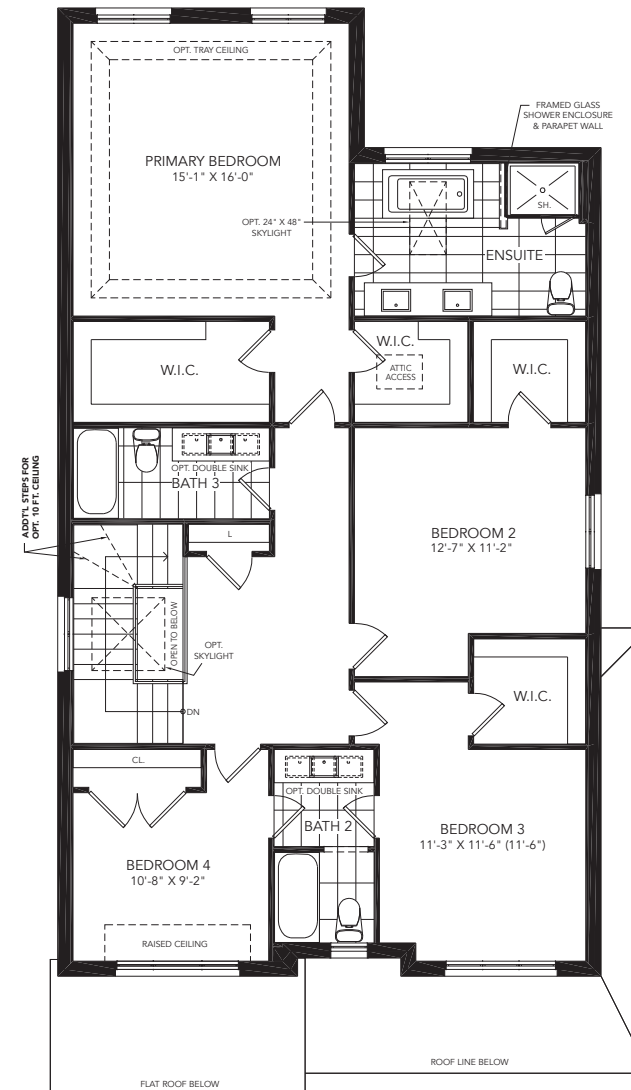
# THE MARLOW

4 BEDROOM  
ELEVATION A - 2,655 SQ. FT.  
ELEVATION B - 2,645 SQ. FT.

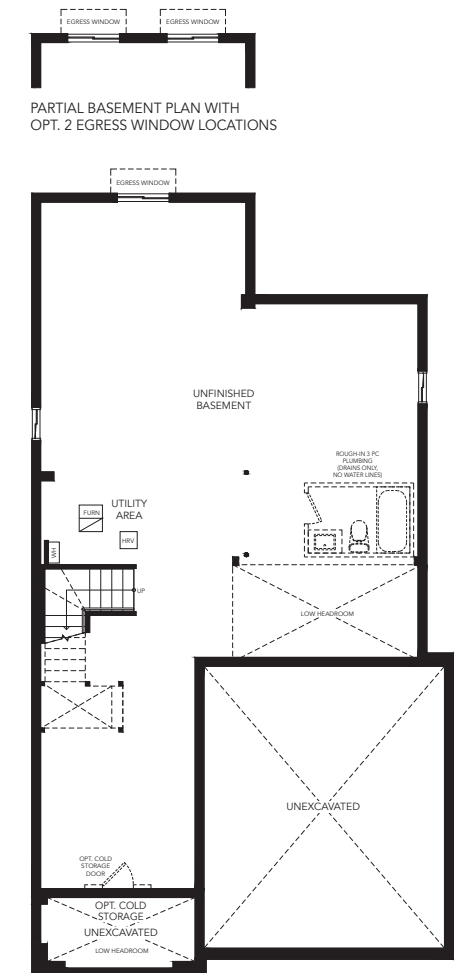
PBR38-14



GROUND FLOOR A



SECOND FLOOR A



BASEMENT A

All illustrations are artist's concept. All dimensions are approximate. Sizes and specifications are subject to change without notice. Actual usable floor space varies from the stated area. Actual layout may be reverse of layout shown. E. & O. E.